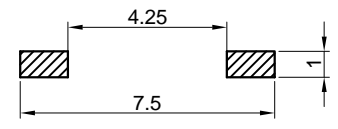
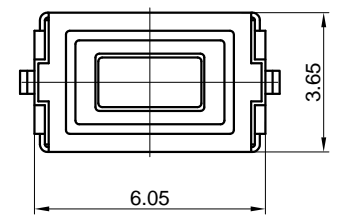
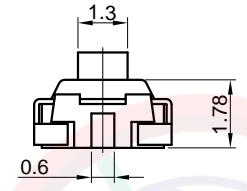
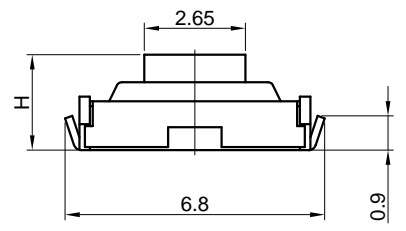
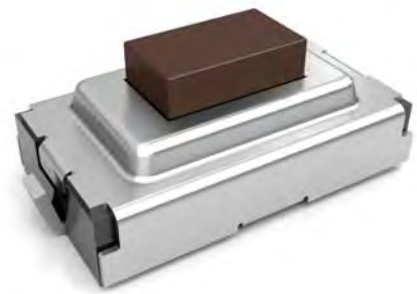


Dept	Qty
DC	1
ED	1
IE	1
ISO	1
PD	1
R&D	1
SD	1
QA	1
QC	1
QE	1

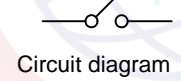
The information provided herein is from CONNELY Electronic Co., Ltd. and is confidential. Any disclosure to a party other than the recipient is prohibited. The intellectual properties and its rights contained herein, including but not limited to, trademarks, patents, copyrights, trade secrets, and technical know-how, are owned exclusively by CONNELY or its affiliates. Unauthorized use or reproduction of any part of this document, in any form or by any means, without the prior written permission of CONNELY, is strictly prohibited. CONNELY may enforce its intellectual property rights at its own discretion, failures or delays to exercise such rights does not constitute a waiver of such rights.



Recommend PCB layout  
Tolerance±0.05



(Series Image-Reference Only)



REV.	DESCRIPTION	DRAWN	CHECKED	APPROVED
A	NEW RELEASE	JLZ 11/05/15'	HZW 11/05/15'	LJC 11/05/15'
B	Drawing Update	JLZ 04/28/19'		

**NOTES:**

- Specifications
  - Switch Function: Single Pole Single Throw
  - Contact Rating: 50mA at 12Vdc
  - Insulation Resistance:100MΩ min.
  - Contact Resistance:100mΩ max.
  - Operating Life:500,00 cycles
  - Stop Strength: Place The Switch Such That Vertical, A Static Load Of 3Kgf Shall Be Applied In The Direction
  - Operation Temperature Range: -25°C to +70°C
  - Wave Soldering: Recommended Solder Temperature At 500°F(260°C)max. 5 Seconds,Subject To PCB 1.6mm Thickness.
  - Hand Soldering: Use Soldering Iron Of 30 Watts,Controlled At 608°F(320°C)Approximately 2 Seconds.
- Product number code:

DS1042-05 - X X X X X X X

- Operating Life
  - 5: 50000 cycles
  - 10: 100000 cycles
- Operating Force
  - 130: 130gf 160: 160gf
  - 170: 170gf 250: 250gf
- Packing Type
  - A: Polybag
  - B: Tube
  - R: Tape & reel
- Actuator Color
  - R: Red N:Brown
- Housing Color
  - K: Black N:Brown
- Profile Height(Dim.H)
  - 1:2.5mm 043:4.3mm
- Size
  - 1: 3.6mm\*6mm

GENERAL TOLERANCE		ANGLE TOLERANCE		PROJECTION		TITLE	
X.	±0.60	X.	±5°	UNITS	mm	Tact Switch SMT Type 3.6mmX6mm	
.X	±0.38	.X	±3°	SHEET SIZE	A4	SERIES	DS1042-05 SERIES
.XX	±0.25	.XX	±2°	<b>晨翔电子有限公司</b> <b>CONNFLY ELECTRONIC CO. LTD</b>			
DRAWING TYPE		CUSTOMER					
SCALE	1:1	SHEET	1 OF 1				
DRAWING NO.		C-DS1042-05-XXXXXX-B					