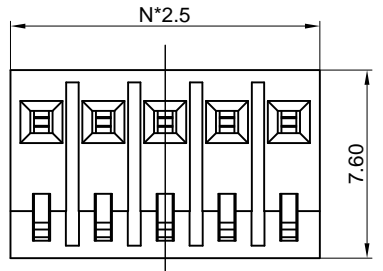


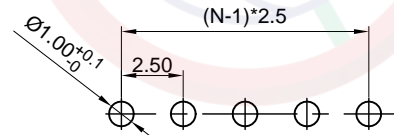
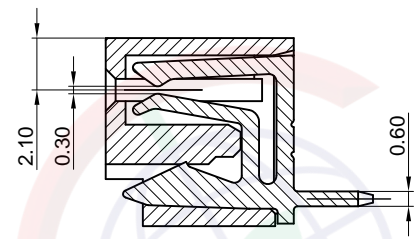
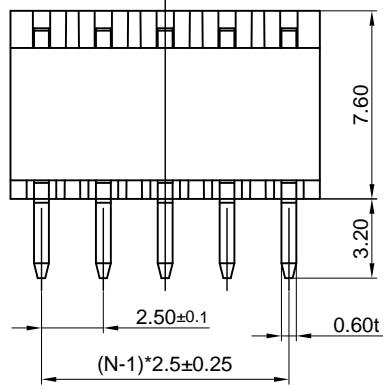
Dept	Qty
DC	1
ED	1
IE	1
ISO	1
PD	1
R&D	1
SD	1
QA	1
QC	1
QF	1

The information provided herein is from CONNELY Electronic Co., Ltd. and is confidential. Any disclosure to a party other than the recipient is prohibited. The intellectual properties and its rights contained herein, including but not limited to, trademarks, patents, copyrights, trade secrets, and technical know-how, are owned exclusively by CONNELY or its affiliates. Unauthorized use or reproduction of any part of this document is strictly prohibited. CONNELY may enforce its intellectual property rights at its own discretion, failures or delays to exercise such rights does not constitute a waiver of such rights.

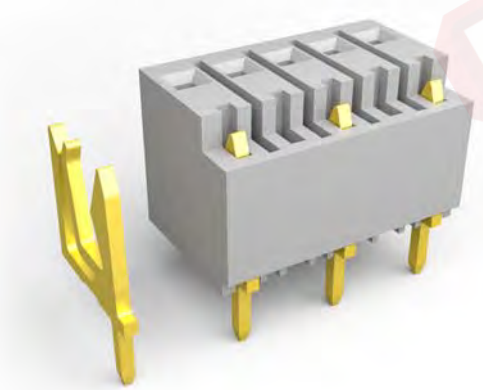
REV.	DESCRIPTION	DRAWN	CHECKED	APPROVED
A	NEW RELEASE	ZHJ 02/11/17'	HZW 02/11/17'	LJC 02/11/17'
B	DRAWING UPDATE	JLZ 01/22/19'		



N=No. of Contacts



Recommend PCB layout  
(Tolerance:±0.05)



(Series Image-Reference Only)

Notes:

Specifications:

1. Contact Resistance: 20mΩ Max.
2. Insulation Resistance: 1000MΩ Min.
3. Dielectric Withstanding Voltage: 600V AC(rms) For 1 Minute.
4. Current Rating:3A.
5. Temperature: -40°C~+105°C.

Materials:

1. Contact Material: Copper Alloy.
2. Contact Plating: Tin Plating Over Nickel.
3. Insulator Material: High Temp,Black,UL94-V0.

Product Number Code:

DS1023-40 - X X X X X X

- Packing type  
B: Tube  
T: Tray
- Housing color  
A: Gray  
B: Black
- Contact plating  
6: Tin  
8: Full gold flash
- Mounting type  
V: Vertical through
- Connector type  
S: Socket
- No. of contacts  
02 - 10

GENERAL TOLERANCE		ANGLE TOLERANCE		PROJECTION	⊕ - ⊖	TITLE	
X.	±0.60	X.	±5°	UNITS	mm	2.5mm "L"Type Female V/T Type	
.X	±0.38	.X	±3°	SHEET SIZE	A4	SERIES	DS1023-40 SERIES
.XX	±0.25	.XX	±2°				
DRAWING TYPE		CUSTOMER					
SCALE		1:1	SHEET	1 OF 1			
DRAWING NO.		C-DS1023-40-XXXXXX-B					

晨翔电子有限公司  
CONNELY CONNELY ELECTRONIC CO. LTD