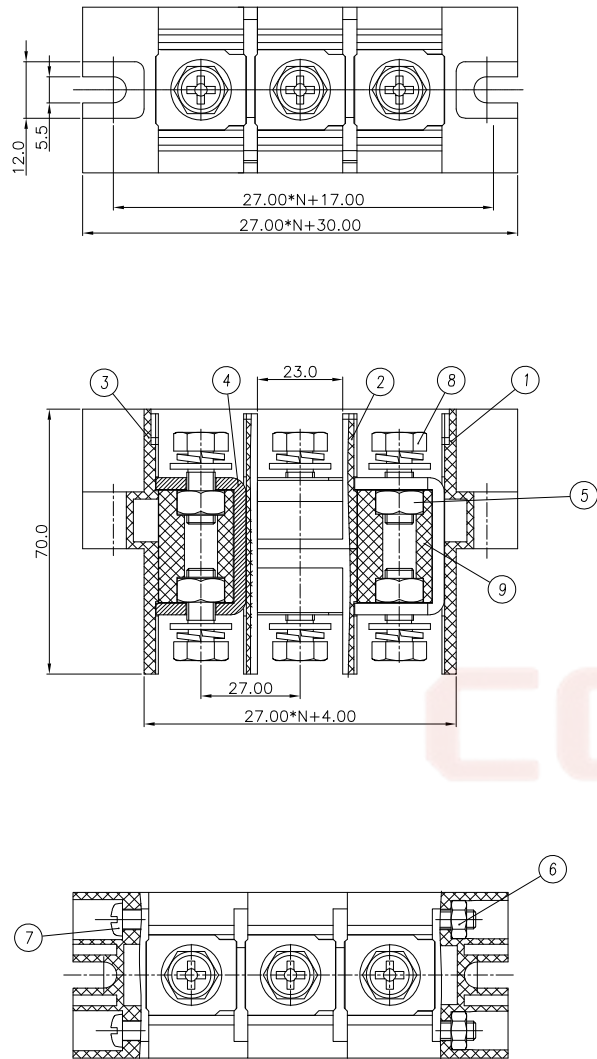


The information provided herein is from CONNELY Electronic Co., Ltd. and is confidential. Any disclosure to a party other than the recipient is prohibited. The intellectual properties and its rights contained herein, including but not limited to, trademarks, patents, copyrights, trade secrets, and technical know-how, are owned exclusively by CONNELY or its affiliates. Unauthorized use of this information in any format or manner. CONNELY may enforce its intellectual property rights at its own discretion; failures or delays to exercise such rights does not constitute a waiver of such rights.



REV.	DESCRIPTION	DRAWN	CHECKED	APPROVED
A	NEW RELEASE	WPY 11/11/25'		

Note:


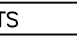
1. The appearance should have no obvious defects, such as weld marks, shrinkage, or color differences.
2. When loosening the screws, the guide strip should not rotate and there should be no jamming.
3. Wire crimping range: 0-10 AWG, Wiring capacity: 4-60mm<sup>2</sup>.
4. Maximum screw torque for M8: 40 lbf.in.
5. Maximum screw torque for M4: 10 lbf.in.
6. Rated voltage and current: 600V, 200A.
7. Power-frequency withstand voltage: AC 2500V/1 minute.
8. Impulse withstand voltage: 6000V, 5 times for each positive and negative pole.
9. Insulation resistance: DC 500V, above 1000 MΩ.
10. Operating temperature: -40℃ to 120℃.

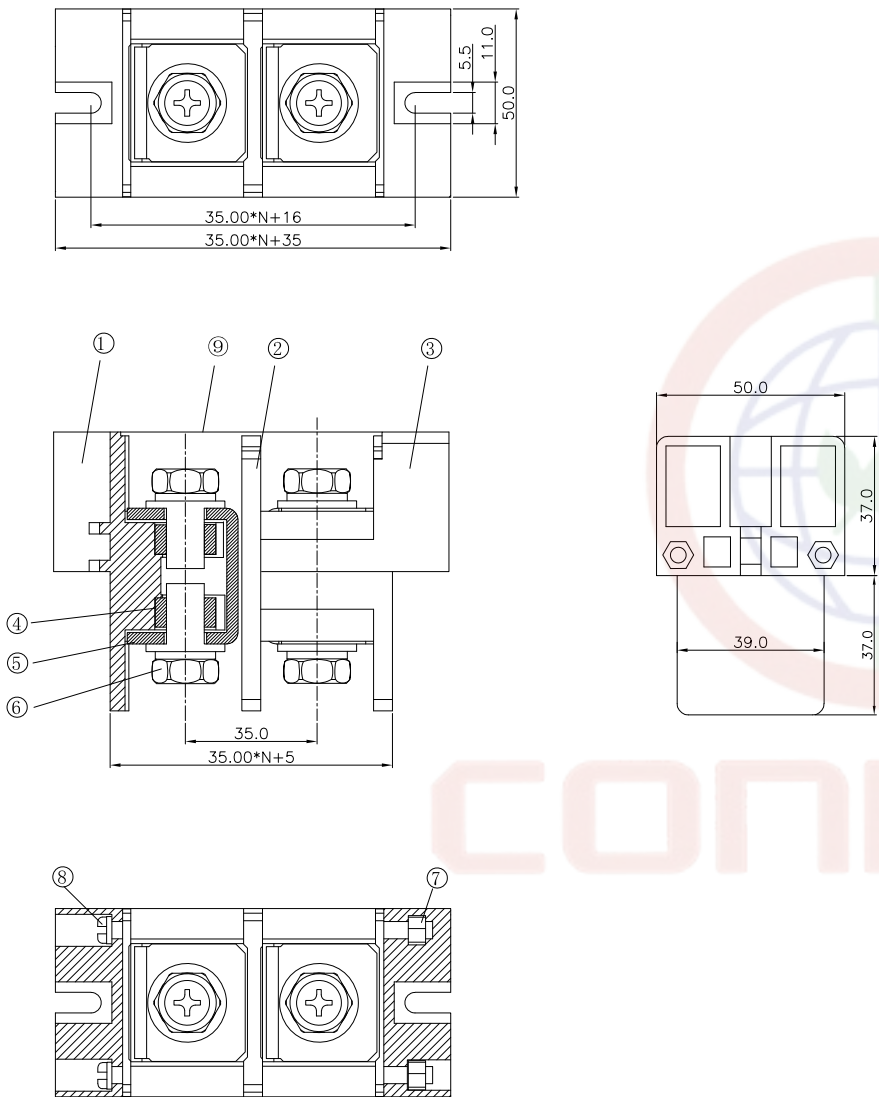
Product Number Code:

DS1212-01 - X X X X X

Cover Type:  
W:W/Cover X:W/O Cover  
Contat Plating:  
N:Full Nickel  
No. of Position:  
1:1Pin 2:2Pin... 10:10Pin  
Housing Color:  
B:Black R:Red  
Rated current:  
200:200A

9	Transparent lid	PC	UL94V-0, True colors
8	Screw	Steel	Galvanizing
7	Side nut	Steel	Galvanizing
6	Nut	Steel	Galvanizing
5	Assembly screw	Steel	Galvanizing
4	Guide vane	H62	Nickel plating
3	Nut plug	PBT+GF15%	UL94V-0, BLACK
2	Middle shell	PBT+GF15%	UL94V-0, BLACK
1	Side panel	PBT+GF15%	UL94V-0, BLACK
No.	NAME	MATERIAL	NOTES

GENERAL TOLERANCE		ANGLE TOLERANCE		PROJECTION		TITLE	(One out, one splice) Through type fence terminal block		
X.	±0.60	X.	±5°	UNITS	mm				
.X	±0.38	.X	±3°	SHEET SIZE	A4	SERIES	DS1212-01 SERIES		
.XX	±0.25	.XX	±2°	<div><div>晨翔电子有限公司 CONNFLY CONNFLY ELECTRONIC CO. LTD</div></div>					
DRAWING TYPE		CUSTOMER							
SCALE		1:1	SHEET						1 OF 2
DRAWING NO.		C-DS1212-01-XXXXX-A							

1		2		3		4		5		6		7		8									
A	Dept														REV.	DESCRIPTION		DRAWN		CHECKED		APPROVED	
	Qty														A	NEW RELEASE		WPY 11/11/25'					
	DC	1																					
	ED	1																					
	IE	1																					
B	ISO	1																					
	PD	1																					
	R&D	1																					
	SD	1																					
	QA	1																					
C	QC	1																					
	QE	1																					
	<div><p>The information provided herein is from CONNELY Electronic Co., Ltd. and is confidential. Any disclosure to a party other than the recipient is prohibited. The intellectual properties and its rights contained herein, including but not limited to, trademarks, patents, copyrights, trade secrets, and technical know-how, are owned exclusively by CONNELY or its affiliates. Unauthorized use of the information herein, in any form or manner, CONNELY may enforce its intellectual property rights at its own discretion; failures or delays to exercise such rights does not constitute a waiver of such rights.</p><p>Top View Dimensions:            Overall Width: 50.0            Pin Pitch: 35.00*N+16            Mounting Hole Pitch: 35.00*N+35            Mounting Hole Diameter: 5.5            Overall Height: 11.0</p><p>Side View Dimensions:            Overall Width: 50.0            Pin Pitch: 35.0            Mounting Hole Pitch: 35.00*N+5            Pin Height: 37.0            Mounting Hole Height: 37.0            Mounting Hole Diameter: 39.0</p><p>Cross-sectional View Callouts:            1: Shell, 2: Shell, 3: Shell, 4: M10 Nut, 5: M10 Screw, 6: M10 Screw, 7: M4 Nut, 8: M4 Screw, 9: DIVERSION STRIP</p></div>																						
Note:																							
1. The casing should have no obvious shrinkage or other defects.																							
2. Maximum screw torque: 102 kgf • cm.																							
3. Rated specifications: 600V, 300A.																							
4. Power-frequency withstand voltage: AC 3000V for 2 minutes without abnormalities.																							
5. Maximum wire crimping range: 150 mm².																							
6. Operating temperature: -40℃ to 120℃.																							
7. Insulation resistance: DC 500V, above 500 MΩ.																							
Product Number Code:																							
DS1212-01 - X X X X X																							