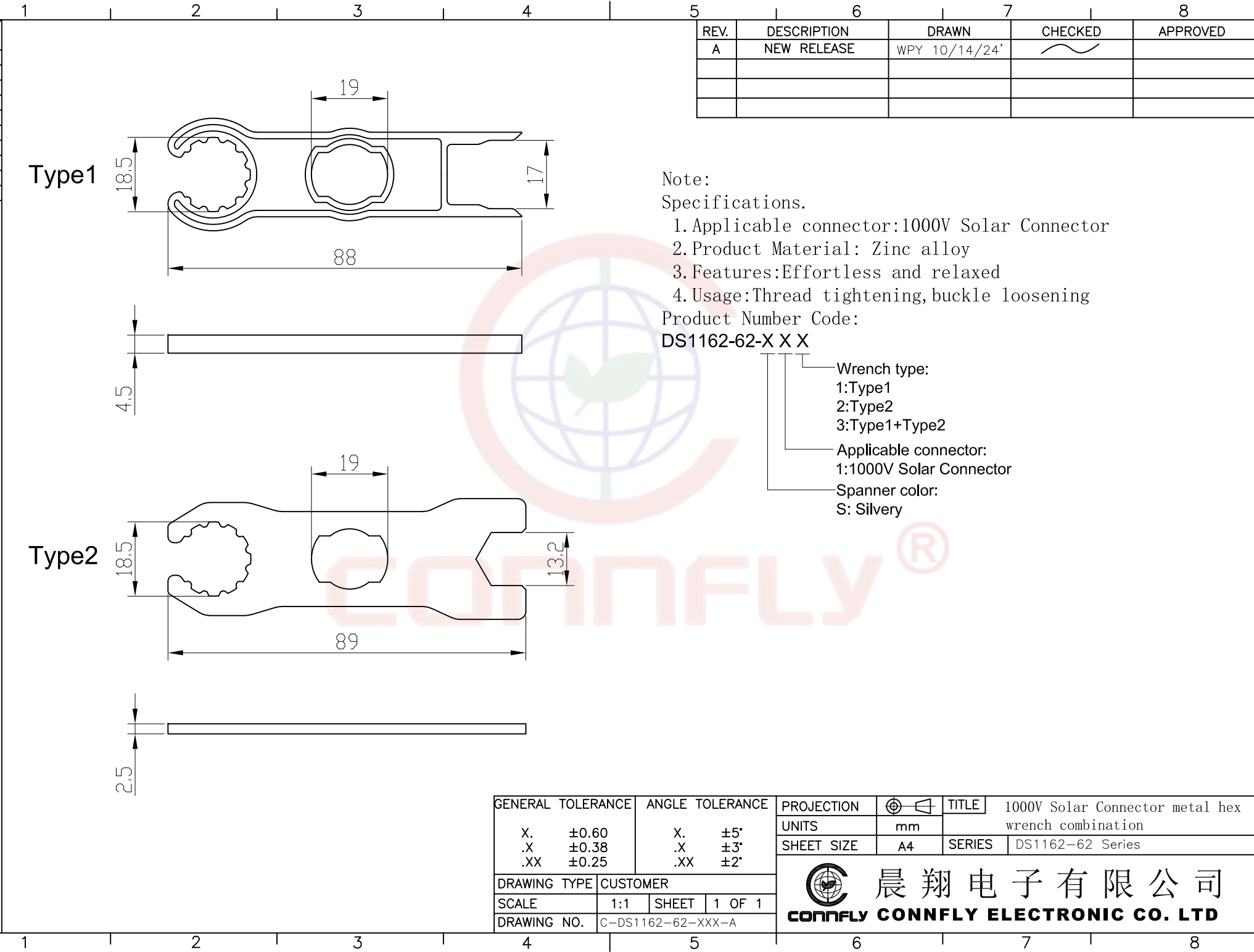


The information provided herein is from CONNFLY Electronic Co., Ltd. and is confidential. Any disclosure to a party other than the recipient is prohibited. The intellectual properties and its rights of CONNFLY Electronic Co., Ltd. are strictly protected. All intellectual properties provided herein are for reference purposes only and does not constitute authorization of its use in any format or manner. CONNFLY may enforce its intellectual property rights at its own discretion; failures or delays to exercise such rights does not constitute a waiver of such rights.



REV.	DESCRIPTION	DRAWN	CHECKED	APPROVED
A	NEW RELEASE	WPY 10/14/24'		

Note:
Specifications.

1. Applicable connector: 1000V Solar Connector
2. Product Material: Zinc alloy
3. Features: Effortless and relaxed
4. Usage: Thread tightening, buckle loosening

Product Number Code:
DS1162-62-X X X

- Wrench type:
 - 1: Type1
 - 2: Type2
 - 3: Type1+Type2
- Applicable connector:
 - 1: 1000V Solar Connector
- Spanner color:
 - S: Silvery

GENERAL TOLERANCE		ANGLE TOLERANCE		PROJECTION		TITLE	1000V Solar Connector metal hex wrench combination
X.	±0.60	X.	±5°	UNITS	mm	SERIES	DS1162-62 Series
.X	±0.38	.X	±3°	SHEET SIZE	A4		
.XX	±0.25	.XX	±2°				
DRAWING TYPE		CUSTOMER		晨翔电子有限公司 CONNFLY CONNFLY ELECTRONIC CO. LTD			
SCALE		1:1	SHEET 1 OF 1				
DRAWING NO.		C-DS1162-62-XXX-A					