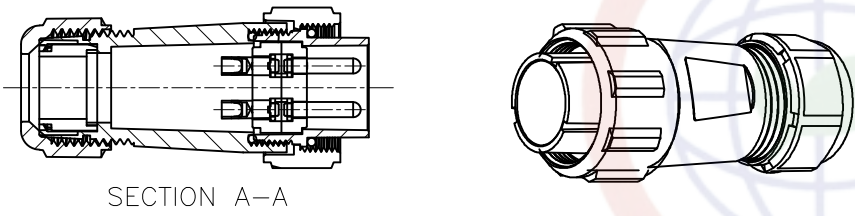
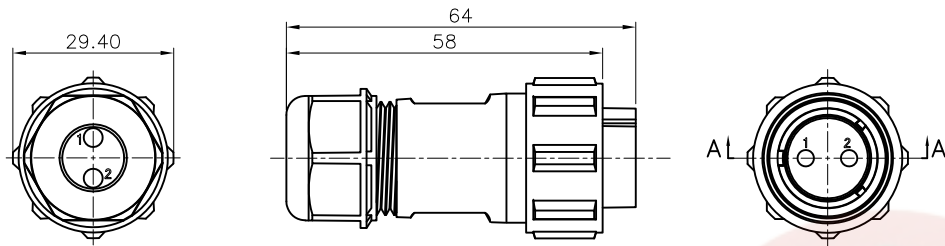
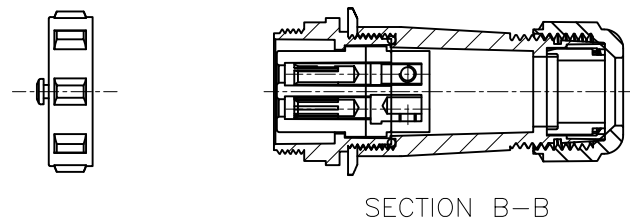
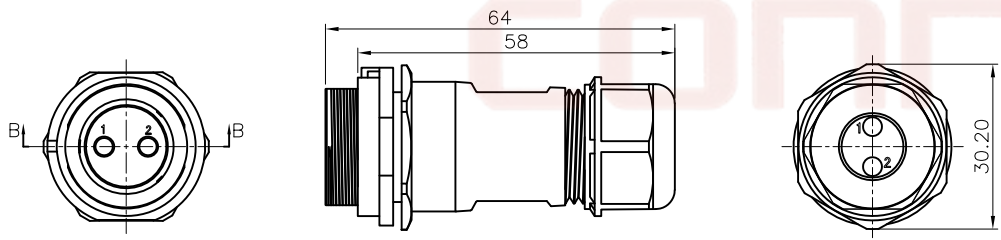


The information provided herein is from CONNPLY Electronic Co., Ltd. and is confidential. Any disclosure to a party other than the recipient, the intellectual properties and its rights of modification is strictly prohibited without prior written consent from CONNPLY. All intellectual properties provided herein are for reference purposes only and does not constitute authorization of its use in any format or manner. CONNPLY may enforce its intellectual property rights at its own discretion; failures or delays to exercise such rights does not constitute a waiver of such rights.

Male



Female



REV.	DESCRIPTION	DRAWN	CHECKED	APPROVED
A	NEW RELEASE	WPY 02/08/25'		

NOTE:

- 1.Rated voltage:400/500V
- 2.Rated current:5/15/30A
- 3.Insulation resistance:2000MΩ
- 4.Withstand voltage:1500V
- 5.Operating temperature: -25℃ to +85℃
- 6.Wiring method: Solder locking
- 7.Mating cycle: 500 cycles

Materials:

- 1.Shell material: PPO,PA66,UL94V-0
- 2.Insulation material: PPS
High temperature resistance 260℃
- 3.Contact material: Brass with gold plating

Product Number Code:
DS1110-76-X X X X X X

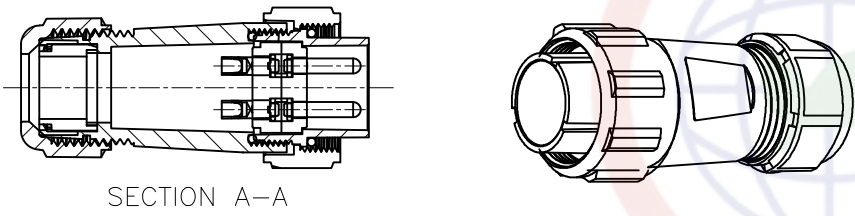
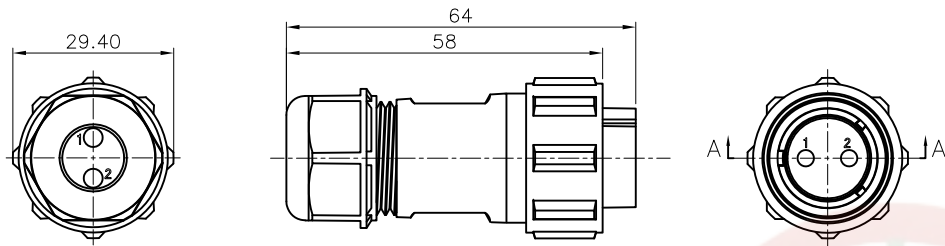
- Install Type:
A:Docking type
- Cable diameter:
1:7-12mm
- Contact Plating:
8:Gold flash
- Color of nut:
L:Blue
- Color of housing:
B:Black
- No. of Contacts:
02 03 04 05A 05C 6 7 9

GENERAL TOLERANCE		ANGLE TOLERANCE		PROJECTION		TITLE	21mm Waterproof aviation plug (Solder type)	
X.	±0.60	X.	±5°	UNITS	mm	SERIES	DS1110-76 Series	
.X	±0.38	.X	±3°	SHEET SIZE	A4			
.XX	±0.25	.XX	±2°					
DRAWING TYPE		CUSTOMER						
SCALE		1:1	SHEET	1 OF 6				
DRAWING NO.		C-DS1110-76-XXXXXX-A						

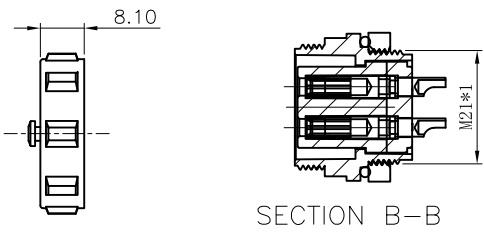
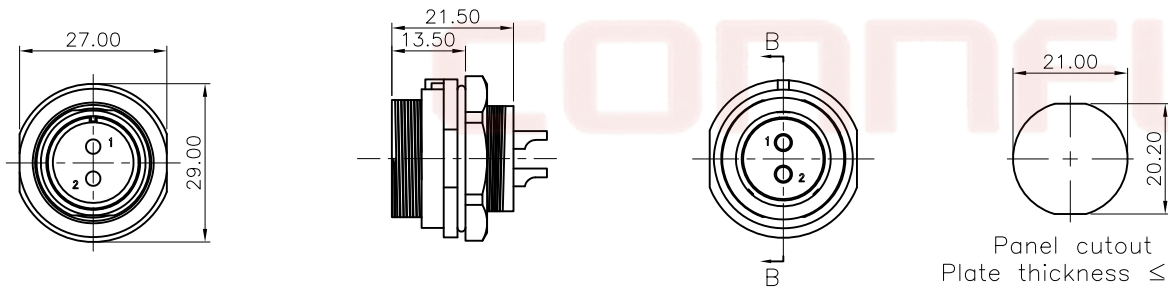
晨翔电子有限公司
CONNPLY CONNPLY ELECTRONIC CO. LTD

The information provided herein is from CONNLY Electronic Co., Ltd. and is confidential. Any disclosure to a party other than the recipient is prohibited. The intellectual properties and its rights of CONNLY Electronic Co., Ltd. are reserved. This drawing is for reference purposes only and does not constitute authorization of its use in any format or manner. CONNLY may enforce its intellectual property rights at its own discretion; failures or delays to exercise such rights does not constitute a waiver of such rights.

Male



Female



REV.	DESCRIPTION	DRAWN	CHECKED	APPROVED
A	NEW RELEASE	WPY 02/08/25'		

NOTE:

- 1.Rated voltage:400/500V
- 2.Rated current:5/15/30A
- 3.Insulation resistance:2000MΩ
- 4.Withstand voltage:1500V
- 5.Operating temperature: -25℃ to +85℃
- 6.Wiring method: Solder locking
- 7.Mating cycle: 500 cycles

Materials:

- 1.Shell material: PPO,PA66,UL94V-0
- 2.Insulation material: PPS
High temperature resistance 260℃
- 3.Contact material: Brass with gold plating

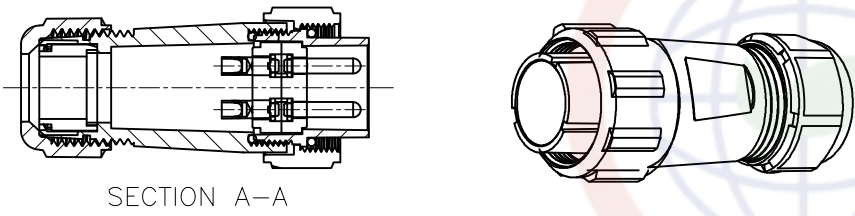
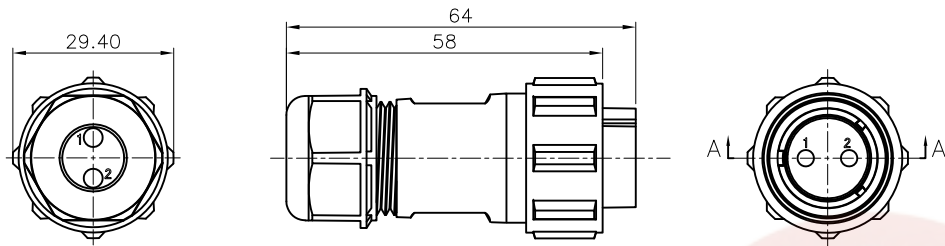
Product Number Code:
DS1110-76-XXXXXX

- Install Type:
B:Rear nut type
- Cable diameter:
1:7-12mm
- Contact Plating:
8:Gold flash
- Color of nut:
L:Blue
- Color of housing:
B:Black
- No. of Contacts:
02 03 04 05A 05C 6 7 9

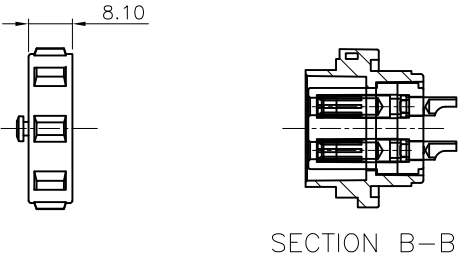
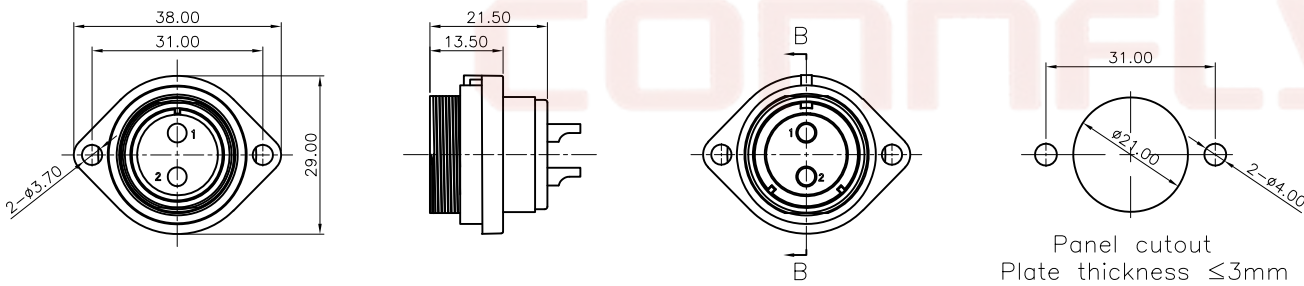
GENERAL TOLERANCE		ANGLE TOLERANCE		PROJECTION		TITLE	21mm Waterproof aviation plug (Solder type)			
X.	±0.60	X.	±5°	UNITS	mm	SERIES	DS1110-76 Series			
.X	±0.38	.X	±3°	SHEET SIZE	A4					
.XX	±0.25	.XX	±2°							
DRAWING TYPE		CUSTOMER			晨翔电子有限公司 CONNFLY CONNLY ELECTRONIC CO. LTD					
SCALE		1:1	SHEET						2 OF 6	
DRAWING NO.		C-DS1110-76-XXXXXX-A								

The information provided herein is from CONNELY Electronic Co., Ltd. and is confidential. Any disclosure to a party other than the recipient is prohibited. The intellectual properties and its rights of CONNELY Electronic Co., Ltd. are reserved. This drawing is for reference purposes only and does not constitute authorization of its use in any format or manner. CONNELY may enforce its intellectual property rights at its own discretion; failures or delays to exercise such rights does not constitute a waiver of such rights.

Male



Female



REV.	DESCRIPTION	DRAWN	CHECKED	APPROVED
A	NEW RELEASE	WPY 02/08/25'		

NOTE:

- 1.Rated voltage:400/500V
- 2.Rated current:5/15/30A
- 3.Insulation resistance:2000MΩ
- 4.Withstand voltage:1500V
- 5.Operating temperature: -25℃ to +85℃
- 6.Wiring method: Solder locking
- 7.Mating cycle: 500 cycles

Materials:

- 1.Shell material: PPO,PA66,UL94V-0
- 2.Insulation material: PPS
High temperature resistance 260℃
- 3.Contact material: Brass with gold plating

Product Number Code:
DS1110-76-XXXXXX

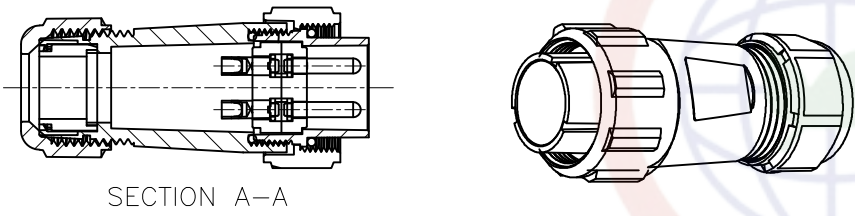
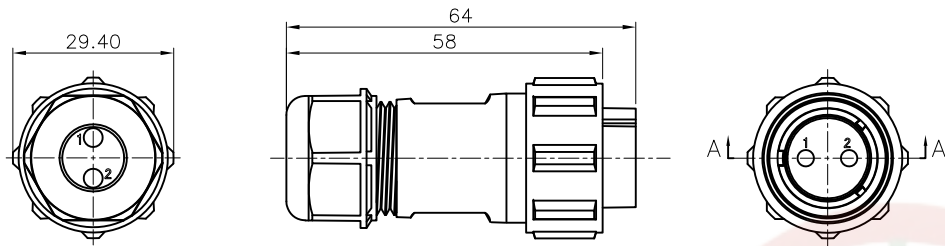
- Install Type:
C:Flange type
- Cable diameter:
1:7-12mm
- Contact Plating:
8:Gold flash
- Color of nut:
L:Blue
- Color of housing:
B:Black
- No. of Contacts:
02 03 04 05A 05C 6 7 9

GENERAL TOLERANCE		ANGLE TOLERANCE		PROJECTION		TITLE	21mm Waterproof aviation plug (Solder type)	
X.	±0.60	X.	±5°	UNITS	mm	SERIES	DS1110-76 Series	
.X	±0.38	.X	±3°	SHEET SIZE	A4			
.XX	±0.25	.XX	±2°					
DRAWING TYPE		CUSTOMER						
SCALE		1:1	SHEET		3 OF 6			
DRAWING NO.		C-DS1110-76-XXXXXX-A						

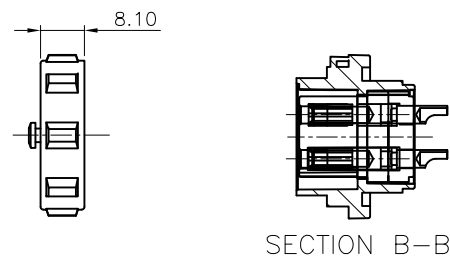
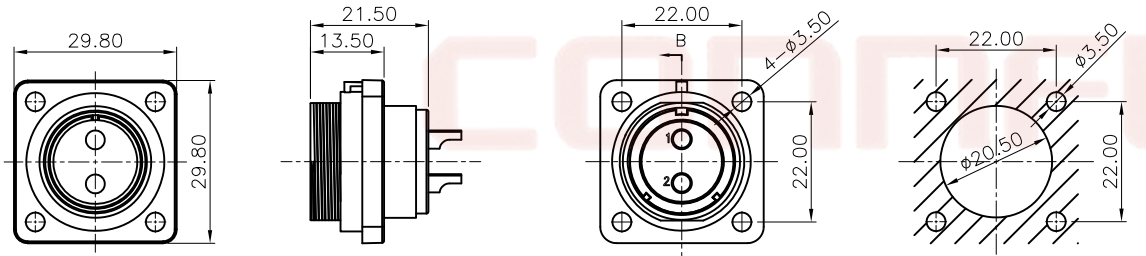
晨翔电子有限公司
CONNELY CONNELY ELECTRONIC CO. LTD

The information provided herein is from CONNLY Electronic Co., Ltd. and is confidential. Any disclosure to a party other than the recipient is prohibited. The intellectual properties and its right of modification is strictly prohibited without prior written consent from CONNLY. All intellectual properties provided herein are for reference purposes only and does not constitute authorization of its use in any format or manner. CONNLY may enforce its intellectual property rights at its own discretion; failures or delays to exercise such rights does not constitute a waiver of such rights.

Male



Female



Panel cutout
Plate thickness ≤3mm

REV.	DESCRIPTION	DRAWN	CHECKED	APPROVED
A	NEW RELEASE	WPY 02/08/25'		

NOTE:

- 1.Rated voltage:400/500V
- 2.Rated current:5/15/30A
- 3.Insulation resistance:2000MΩ
- 4.Withstand voltage:1500V
- 5.Operating temperature: -25℃ to +85℃
- 6.Wiring method: Solder locking
- 7.Mating cycle: 500 cycles

Materials:

- 1.Shell material: PPO,PA66,UL94V-0
- 2.Insulation material: PPS
High temperature resistance 260℃
- 3.Contact material: Brass with gold plating

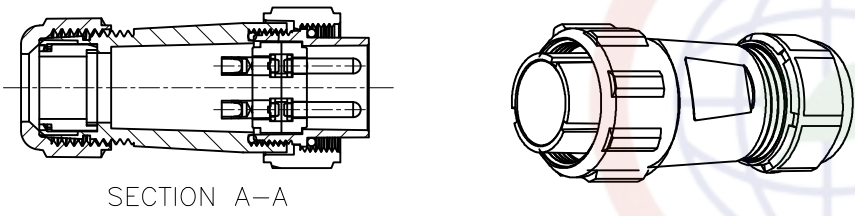
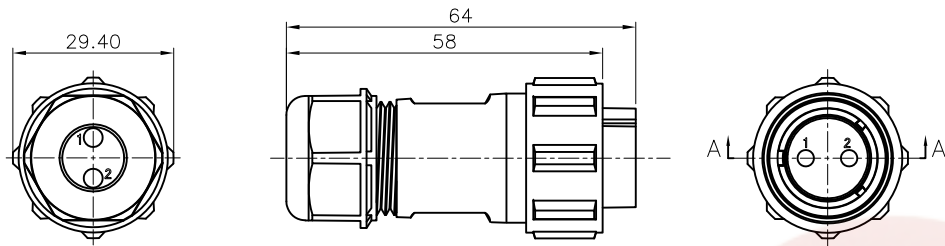
Product Number Code:
DS1110-76-XXXXXX

- Install Type:
D:Square disc type
- Cable diameter:
1:7-12mm
- Contact Plating:
8:Gold flash
- Color of nut:
L:Blue
- Color of housing:
B:Black
- No. of Contacts:
02 03 04 05A 05C 6 7 9

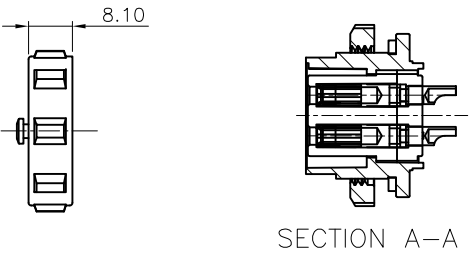
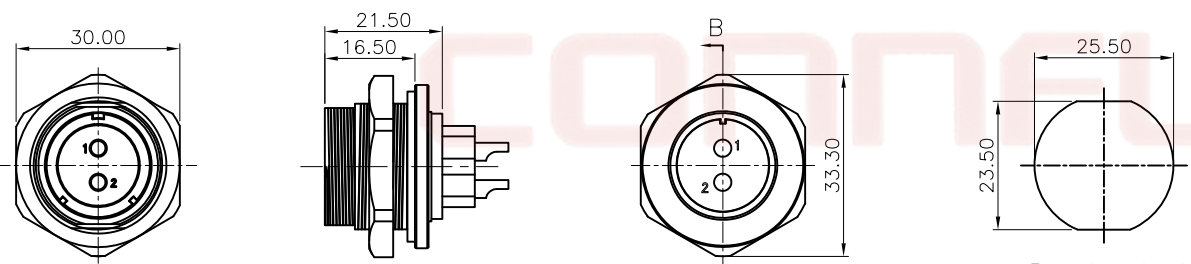
GENERAL TOLERANCE		ANGLE TOLERANCE		PROJECTION		TITLE	21mm Waterproof aviation plug (Solder type)	
X.	±0.60	X.	±5°	UNITS	mm	SERIES	DS1110-76 Series	
.X	±0.38	.X	±3°	SHEET SIZE	A4			
.XX	±0.25	.XX	±2°					
DRAWING TYPE		CUSTOMER			晨翔电子有限公司 CONNFLY CONNLY ELECTRONIC CO. LTD			
SCALE		1:1	SHEET 4 OF 6					
DRAWING NO.		C-DS1110-76-XXXXXX-A						

The information provided herein is from CONNELY Electronic Co., Ltd. and is confidential. Any disclosure to a party other than the recipient is prohibited. The intellectual properties and its rights of CONNELY Electronic Co., Ltd. are reserved. This drawing is for reference purposes only and does not constitute authorization of its use in any format or manner. CONNELY may enforce its intellectual property rights at its own discretion; failures or delays to exercise such rights does not constitute a waiver of such rights.

Male



Female



REV.	DESCRIPTION	DRAWN	CHECKED	APPROVED
A	NEW RELEASE	WPY 02/08/25'		

NOTE:

- 1.Rated voltage:400/500V
- 2.Rated current:5/15/30A
- 3.Insulation resistance:2000MΩ
- 4.Withstand voltage:1500V
- 5.Operating temperature: -25℃ to +85℃
- 6.Wiring method: Solder locking
- 7.Mating cycle: 500 cycles

Materials:

- 1.Shell material: PPO,PA66,UL94V-0
- 2.Insulation material: PPS
High temperature resistance 260℃
- 3.Contact material: Brass with gold plating

Product Number Code:
DS1110-76-XXXXXX

- Install Type:
E:Front nut type
- Cable diameter:
1:7-12mm
- Contact Plating:
8:Gold flash
- Color of nut:
L:Blue
- Color of housing:
B:Black
- No. of Contacts:
02 03 04 05A 05C 6 7 9

Panel cutout
Plate thickness ≤3mm

GENERAL TOLERANCE		ANGLE TOLERANCE		PROJECTION		TITLE	21mm Waterproof aviation plug (Solder type)	
X.	±0.60	X.	±5°	UNITS	mm	SERIES	DS1110-76 Series	
.X	±0.38	.X	±3°	SHEET SIZE	A4			
.XX	±0.25	.XX	±2°					
DRAWING TYPE		CUSTOMER						
SCALE		1:1	SHEET		4 OF 6			
DRAWING NO.		C-DS1110-76-XXXXXX-A						

晨翔电子有限公司
CONNELY CONNELY ELECTRONIC CO. LTD

The information provided herein is from CONNLY Electronic Co., Ltd. and is confidential. Any disclosure to a party other than the recipient is prohibited. The intellectual properties and its right of modification is strictly prohibited without prior written consent from CONNLY. All intellectual properties provided herein are for reference purposes only and does not constitute authorization of its use in any format or manner. CONNLY may enforce its intellectual property rights at its own discretion; failures or delays to exercise such rights does not constitute a waiver of such rights.

Dept	REV.	DESCRIPTION	DRAWN	CHECKED	APPROVED
Qty	A	NEW RELEASE	WPY 02/08/25'		
DC					
ED					
IE					
ISO					
PD					
R&D					
SD					
QA					
QC					
QE					

Solder contact arrangement and spec

No.of Contacts	2	3	4	5A	5C	6	7	9
Malc contact face view								
Rated current (A)	30A	30A	30A	30A	15A	15A	15A	5A
Contact diameter	Ø2.8*2	Ø2.8*3	Ø2.8*4	Ø2.8*5	Ø1.8*5	Ø1.8*6	Ø1.8*7	Ø1.0*9
Wiring method	Screw locking							
Working Voltage(AC.V)	500V	500V	500V	500V	500V	500V	500V	400V
Test Voltage(AC.V)1min	1500V	1500V	1500V	1500V	1500V	1500V	1500V	1500V
Contact resistance(mΩ)	1mΩ	1mΩ	1mΩ	1mΩ	2.5mΩ	2.5mΩ	2.5mΩ	5mΩ
Wire Size(mm²/AWG)	≤4.17/11	≤4.17/11	≤4.17/11	≤4.17/11	≤2/14	≤2/14	≤2/14	≤0.785/18

GENERAL TOLERANCE	ANGLE TOLERANCE	PROJECTION		TITLE	21mm Waterproof aviation plug (Solder type)
X. ±0.60	X. ±5°	UNITS	mm	SERIES	DS1110-76 Series
.X ±0.38	.X ±3°	SHEET SIZE	A4		
.XX ±0.25	.XX ±2°				
DRAWING TYPE	CUSTOMER				
SCALE	1:1	SHEET	6 OF 6		
DRAWING NO.	C-DS1110-76-XXXXXX-A				

晨翔电子有限公司
CONNFLY CONNLY ELECTRONIC CO. LTD