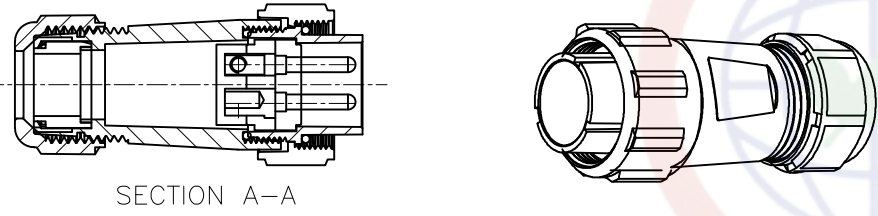
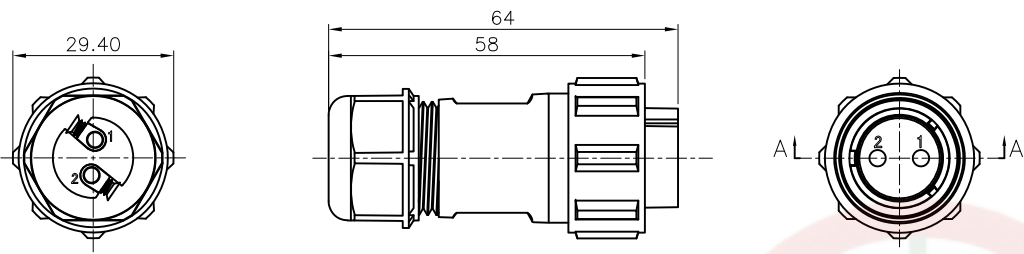
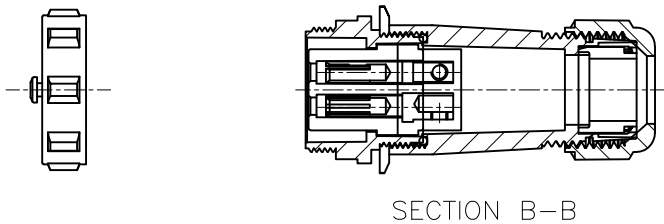
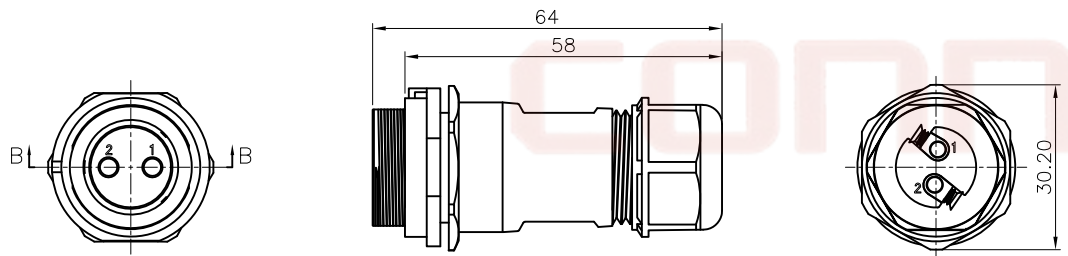


The information provided herein is from CONNFLY Electronic Co., Ltd. and is confidential. Any disclosure to a party other than the recipient is prohibited. The intellectual properties and its right of modification is strictly prohibited without prior written consent from CONNFLY. All intellectual properties provided herein are for reference purposes only and does not constitute authorization of its use in any format or manner. CONNFLY may enforce its intellectual property rights at its own discretion; failures or delays to exercise such rights does not constitute a waiver of such rights.

Male



Female



REV.	DESCRIPTION	DRAWN	CHECKED	APPROVED
A	NEW RELEASE	WPY 02/08/25'		

- NOTE:
- Rated voltage:400/500V
 - Rated current:5/15/30A
 - Insulation resistance:2000MΩ
 - Withstand voltage:1500V
 - Operating temperature: -25°C to +85°C
 - Wiring method: Screw locking
 - Mating cycle: 500 cycles

Materials:

- Shell material: PPO,PA66,UL94V-0
- Insulation material: PPS
High temperature resistance 260°C
- Contact material: Brass with gold plating

Product Number Code:

DS1110-73-X X X X X X

- Install Type:
 - A:Docking type
- Cable diameter:
 - 1:7-12mm
- Contact Plating:
 - 8:Gold flash
- Color of nut:
 - L:Blue
- Color of housing:
 - B:Black
- No. of Contacts:
 - 02 03 04 05A 05C 6 7 9

GENERAL TOLERANCE		ANGLE TOLERANCE	
X.	±0.60	X.	±5°
.X	±0.38	.X	±3°
.XX	±0.25	.XX	±2°

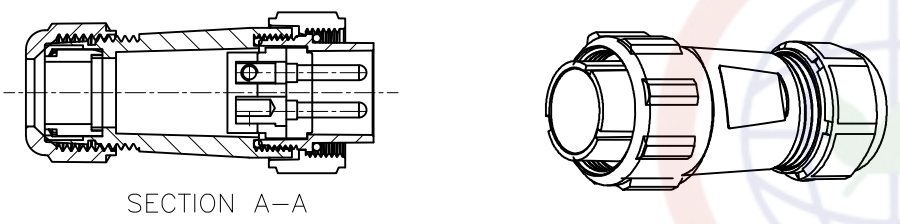
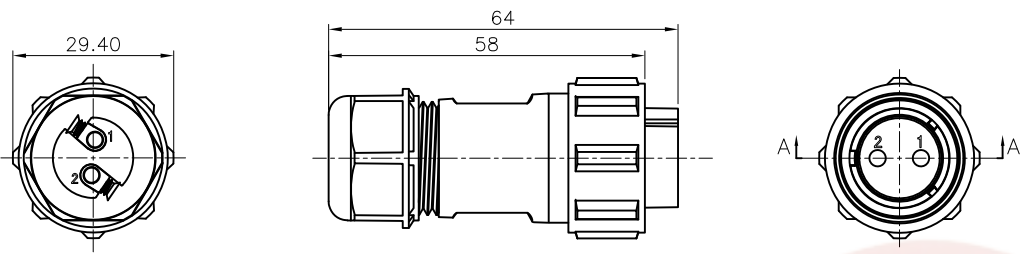
DRAWING TYPE	CUSTOMER		
SCALE	1:1	SHEET	1 OF 6
DRAWING NO.	C-DS1110-73-XXXXXX-A		

PROJECTION		TITLE	21mm Waterproof aviation plug (Screw type)
UNITS	mm	SERIES	DS1110-73 Series

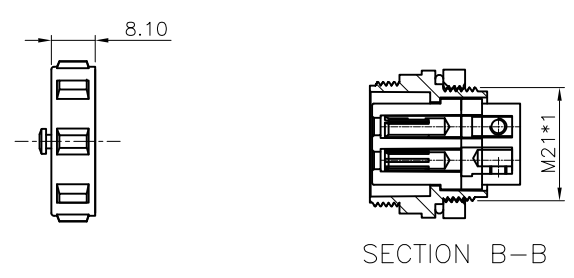
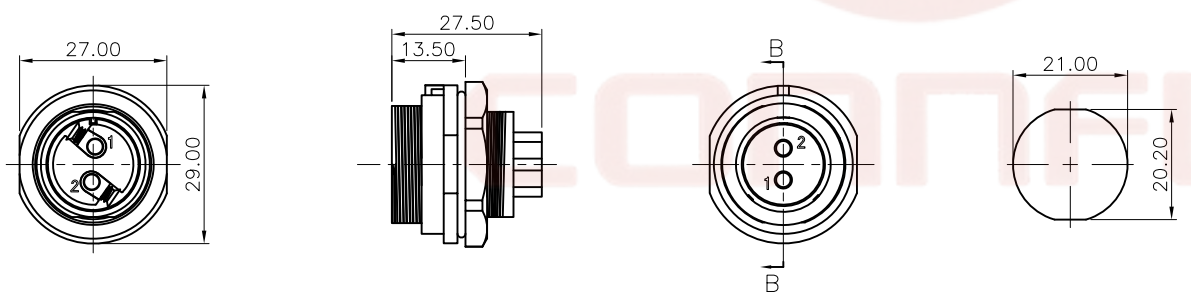
晨翔电子有限公司
CONNFLY CONNFLY ELECTRONIC CO. LTD

The information provided herein is from CONNPLY Electronic Co., Ltd. and is confidential. Any disclosure to a party other than the recipient is prohibited. The intellectual properties and its right of modification is strictly prohibited without prior written consent from CONNPLY. All intellectual properties provided herein are for reference purposes only and does not constitute authorization of its use in any format or manner. CONNPLY may enforce its intellectual property rights at its own discretion; failures or delays to exercise such rights does not constitute a waiver of such rights.

Male



Female



REV.	DESCRIPTION	DRAWN	CHECKED	APPROVED
A	NEW RELEASE	WPY 02/08/25'		

NOTE:

- Rated voltage:400/500V
- Rated current:5/15/30A
- Insulation resistance:2000MΩ
- Withstand voltage:1500V
- Operating temperature: -25℃ to +85℃
- Wiring method: Screw locking
- Mating cycle: 500 cycles

Materials:

- Shell material: PPO,PA66,UL94V-0
- Insulation material: PPS
High temperature resistance 260℃
- Contact material: Brass with gold plating

Product Number Code:
DS1110-73-X X X X X X

- Install Type:
- B:Rear nut type
- Cable diameter:
- 1:7-12mm
- Contact Plating:
- 8:Gold flash
- Color of nut:
- L:Blue
- Color of housing:
- B:Black
- No. of Contacts:
- 02 03 04 05A 05C 6 7 9

GENERAL TOLERANCE		ANGLE TOLERANCE	
X.	±0.60	X.	±5°
.X	±0.38	.X	±3°
.XX	±0.25	.XX	±2°

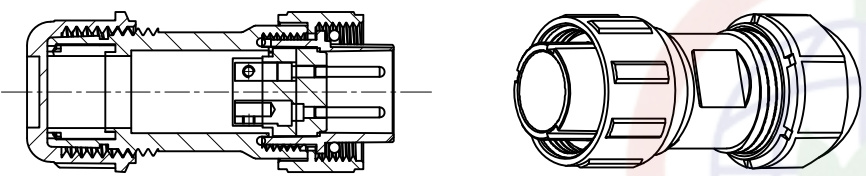
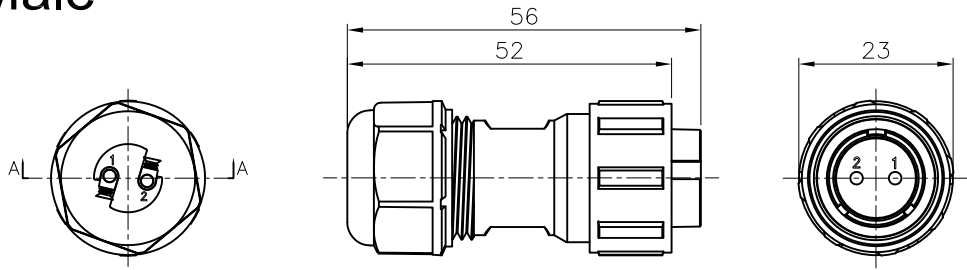
DRAWING TYPE	CUSTOMER		
SCALE	1:1	SHEET	2 OF 6
DRAWING NO.	C-DS1110-73-XXXXXX-A		

PROJECTION		TITLE	21mm Waterproof aviation plug (Screw type)
UNITS	mm	SERIES	DS1110-73 Series

晨翔电子有限公司
CONNPLY CONNPLY ELECTRONIC CO. LTD

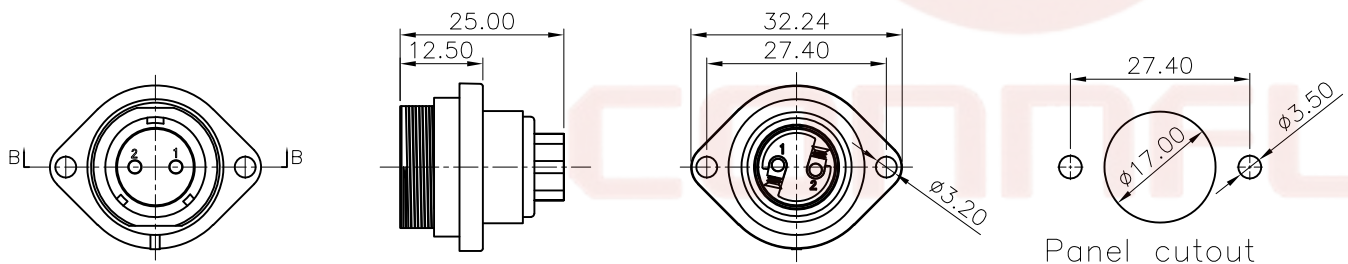
The information provided herein is from CONNELY Electronic Co., Ltd. and is confidential. Any disclosure to a party other than the recipient is prohibited. The intellectual properties and its rights of CONNELY Electronic Co., Ltd. are strictly protected. All intellectual properties provided herein are for reference purposes only and does not constitute authorization of its use in any format or manner. CONNELY may enforce its intellectual property rights at its own discretion; failures or delays to exercise such rights does not constitute a waiver of such rights.

Male

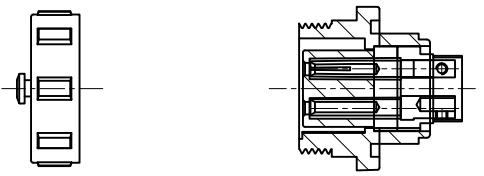


SECTION A-A

Female



Panel cutout
Plate thickness ≤ 3mm



SECTION B-B

REV.	DESCRIPTION	DRAWN	CHECKED	APPROVED
A	NEW RELEASE	WPY 02/08/25'		

- NOTE:
- Rated voltage: 500V
 - Rated current: 5/10A
 - Insulation resistance: 2000MΩ
 - Withstand voltage: 1500V
 - Operating temperature: -25°C to +85°C
 - Wiring method: Screw locking
 - Mating cycle: 500 cycles

- Materials:
- Shell material: PPO, PA66, UL94V-0
 - Insulation material: PPS
High temperature resistance 260°C
 - Contact material: Brass with gold plating

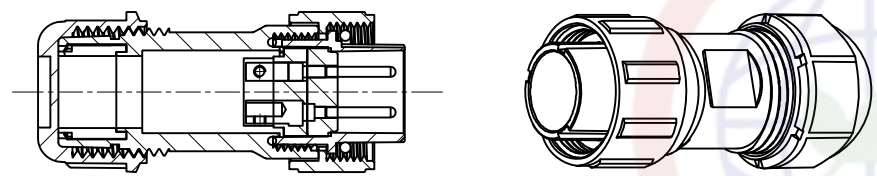
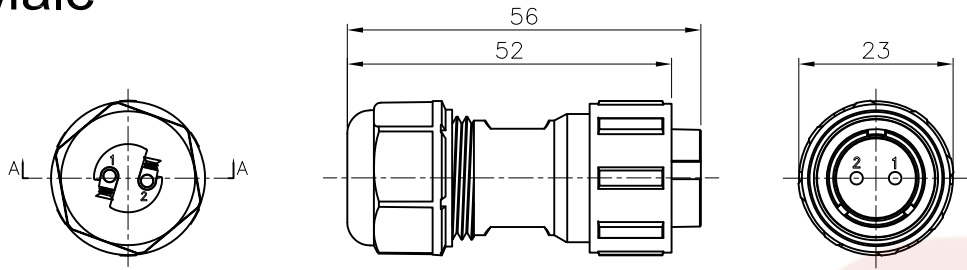
Product Number Code:
DS1110-72-XXXXXX

- Install Type:
C: Flange type
- Cable diameter:
1: 6-10mm
- Contact Plating:
8: Gold flash
- Color of nut:
L: blue
- Color of housing:
B: Black
- No. of Contacts:
02: 2Pin 03: 3Pin
04: 4Pin 05: 5Pin

GENERAL TOLERANCE		ANGLE TOLERANCE		PROJECTION		TITLE	17mm Waterproof aviation plug (Screw type)	
X.	±0.60	X.	±5°	UNITS	mm			
.X	±0.38	.X	±3°	SHEET SIZE	A4	SERIES	DS1110-72 Series	
.XX	±0.25	.XX	±2°	晨翔电子有限公司 CONNELY ELECTRONIC CO. LTD				
DRAWING TYPE		CUSTOMER						
SCALE	1:1	SHEET	3 OF 5					
DRAWING NO.		C-DS1110-72-XXXXXX-A						

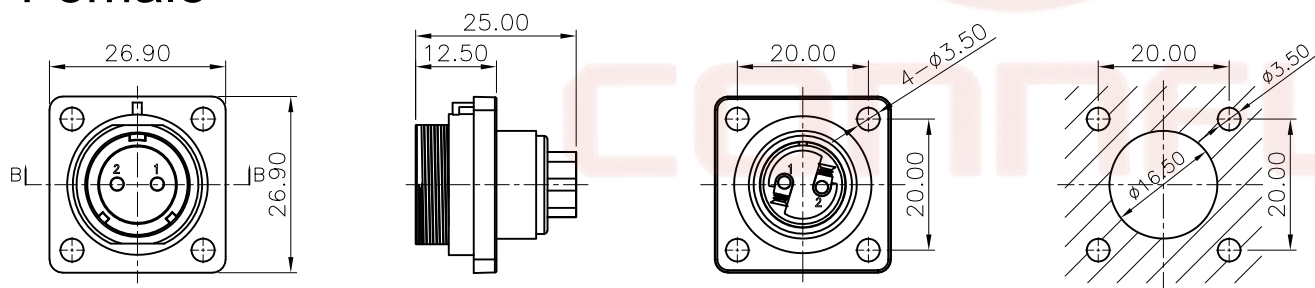
The information provided herein is from CONNPLY Electronic Co., Ltd. and is confidential. Any disclosure to a party other than the recipient is prohibited. The intellectual properties and its rights are reserved for CONNPLY Electronic Co., Ltd. All intellectual properties provided herein are for reference purposes only and does not constitute authorization of its use in any format or manner. CONNPLY may enforce its intellectual property rights at its own discretion; failures or delays to exercise such rights does not constitute a waiver of such rights.

Male

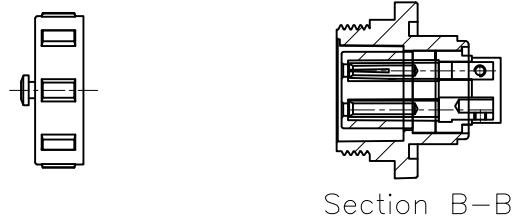


SECTION A-A

Female



Panel cutout
Plate thickness ≤3mm



Section B-B

REV.	DESCRIPTION	DRAWN	CHECKED	APPROVED
A	NEW RELEASE	WPY 02/08/25'		

NOTE:

- Rated voltage:500V
- Rated current:5/10A
- Insulation resistance:2000MΩ
- Withstand voltage:1500V
- Operating temperature: -25℃ to +85℃
- Wiring method: Screw locking
- Mating cycle: 500 cycles

Materials:

- Shell material: PPO,PA66,UL94V-0
- Insulation material: PPS
High temperature resistance 260℃
- Contact material: Brass with gold plating

Product Number Code:
DS1110-72-X X X X X X

- Install Type:
D:Square disc type
- Cable diameter:
1:6-10mm
- Contact Plating:
8:Gold flash
- Color of nut:
L:blue
- Color of housing:
B:Black
- No.of Contacts:
02:2Pin 03:3Pin
04:4Pin 05:5Pin

GENERAL TOLERANCE		ANGLE TOLERANCE		PROJECTION		TITLE	17mm Waterproof aviation plug (Screw type)	
X.	±0.60	X.	±5°	UNITS	mm			
.X	±0.38	.X	±3°	SHEET SIZE	A4	SERIES	DS1110-72 Series	
.XX	±0.25	.XX	±2°					
DRAWING TYPE		CUSTOMER			晨翔电子有限公司 CONNPLY CONNPLY ELECTRONIC CO. LTD			
SCALE		1:1	SHEET 4 OF 5					
DRAWING NO.		C-DS1110-72-XXXXXX-A						

A
 B
 C
 D
 E
 F
 G
 H

Dept Qty
 DC 1
 ED 1
 IE 1
 ISO 1
 PD 1
 R&D 1
 SD 1
 QA 1
 QC 1
 QE 1

The information provided herein is from CONNELY Electronic Co., Ltd. and is confidential. Any disclosure to a party other than the recipient is prohibited. The intellectual properties and its rights contained herein, including but not limited to, trademarks, patents, copyrights, trade secrets, and technical know-how, are owned exclusively by CONNELY or its affiliates. Unauthorized use or its modification is strictly prohibited without prior written consent from CONNELY. All intellectual properties provided herein are for reference purposes only and does not constitute authorization of its use in any format or manner. CONNELY may enforce its intellectual property rights at its own discretion, failures or delays to exercise such rights does not constitute a waiver of such rights.

1 2 3 4 5 6 7 8

REV.	DESCRIPTION	DRAWN	CHECKED	APPROVED
A	NEW RELEASE	WPY 02/08/25'		

Solder contact arrangement and spec

No.of Contacts	2	3	4	5
Malc contact face view				
Rated current (A)	10A	10A	5A	5A
Contact diameter	1.5*2	1.5*3	1.0*4	1.0*5
Wiring method	Screw locking			
Woring Voltage(AC.V)	500V	500V	500V	500V
Test Voltage(AC.V)1min	1500V	1500V	1500V	1500V
Contact resistance(mΩ)	2.5mΩ	2.5mΩ	5mΩ	5mΩ
Wire Size(mm ² /AWG)	≤2/14	≤2/14	≤0.785/18	≤0.785/18

GENERAL TOLERANCE		ANGLE TOLERANCE		PROJECTION		TITLE	17mm Waterproof aviation plug (Screw type)	
X.	±0.60	X.	±5°	UNITS	mm	SHEET SIZE	A4	
.X	±0.38	.X	±3°	SHEET SIZE	A4	SERIES	DS1110-72 Series	
.XX	±0.25	.XX	±2°	DRAWING TYPE		CUSTOMER		
DRAWING NO.		SCALE		DRAWING NO.		C-DS1110-72-XXXXXX-A		
SCALE		1:1		SHEET		5 OF 5		

晨翔电子有限公司
CONNELY CONNELY ELECTRONIC CO. LTD

1 2 3 4 5 6 7 8