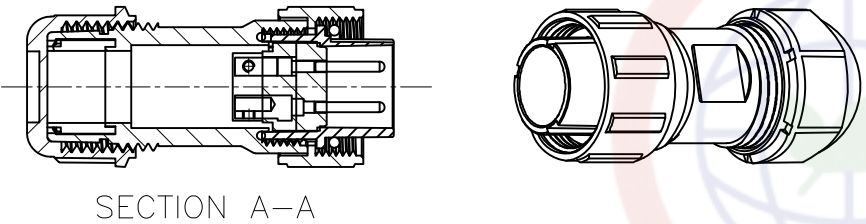
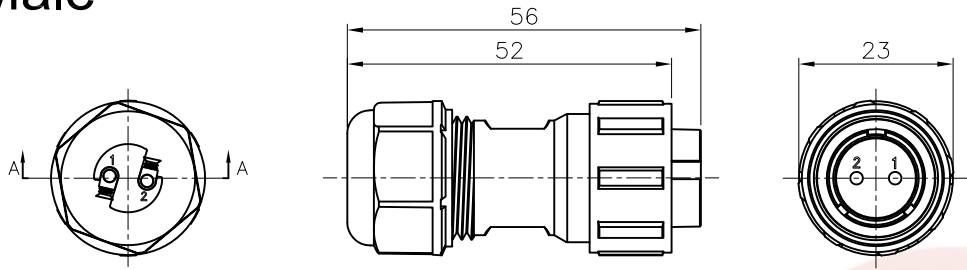
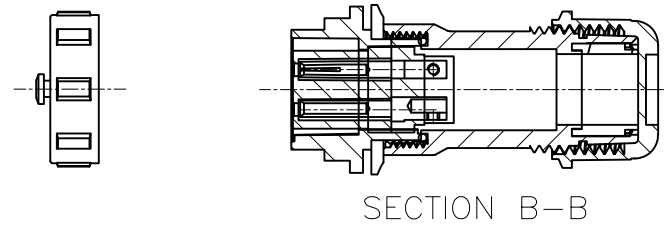
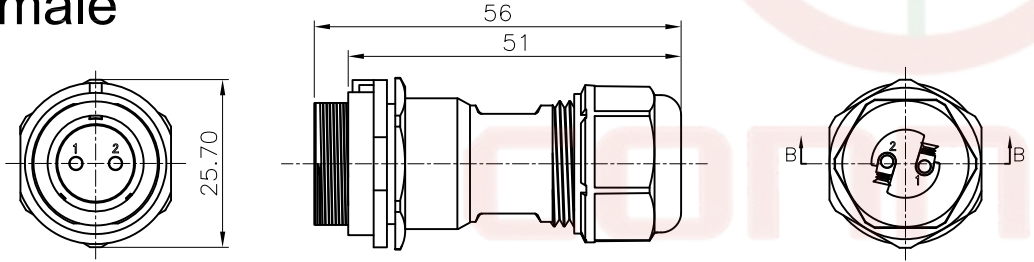


The information provided herein is from CONNPLY Electronic Co., Ltd. and is confidential. Any disclosure to a party other than the recipient is prohibited. The intellectual properties and its rights of CONNPLY Electronic Co., Ltd. are strictly protected. All intellectual properties provided herein are for reference purposes only and does not constitute authorization of its use in any format or manner. CONNPLY may enforce its intellectual property rights at its own discretion; failures or delays to exercise such rights does not constitute a waiver of such rights.

# Male



# Female



REV.	DESCRIPTION	DRAWN	CHECKED	APPROVED
A	NEW RELEASE	WPY 02/08/25'		

NOTE:

- Rated voltage:500V
- Rated current:5/10A
- Insulation resistance:2000MΩ
- Withstand voltage:1500V
- Operating temperature: -25℃ to +85℃
- Wiring method: Screw locking
- Mating cycle: 500 cycles

Materials:

- Shell material: PPO,PA66,UL94V-0
- Insulation material: PPS  
High temperature resistance 260℃
- Contact material: Brass with gold plating

Product Number Code:  
**DS1110-72-X X X X X X**

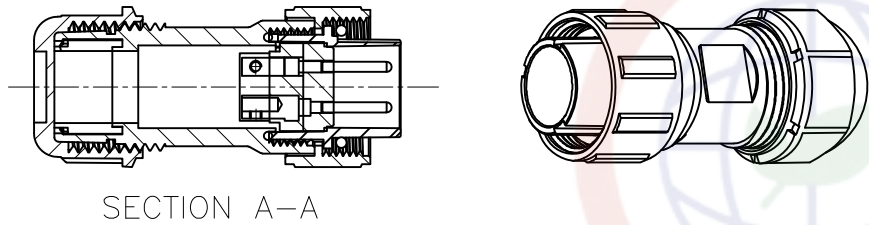
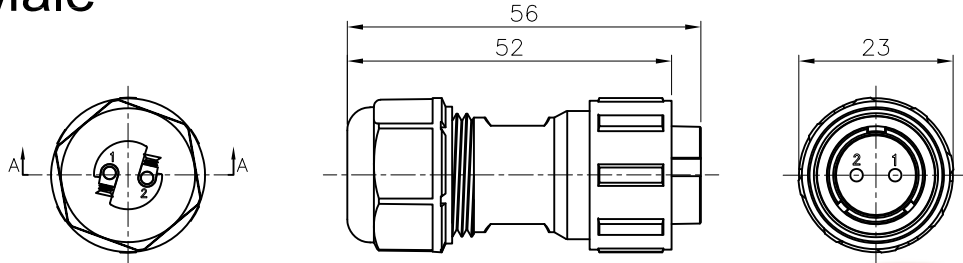
- Install Type:  
A:Docking type
- Cable diameter:  
1:6-10mm
- Contact Plating:  
8:Gold flash
- Color of nut:  
L:blue
- Color of housing:  
B:Black
- No. of Contacts:  
02:2Pin 03:3Pin  
04:4Pin 05:5Pin

GENERAL TOLERANCE		ANGLE TOLERANCE		PROJECTION		TITLE	17mm Waterproof aviation plug (Screw type)		
X.	±0.60	X.	±5°	UNITS	mm	SERIES	DS1110-72 Series		
.X	±0.38	.X	±3°	SHEET SIZE	A4				
.XX	±0.25	.XX	±2°						
DRAWING TYPE		CUSTOMER							
SCALE		1:1	SHEET		1 OF 5				
DRAWING NO.		C-DS1110-72-XXXXXX-A							

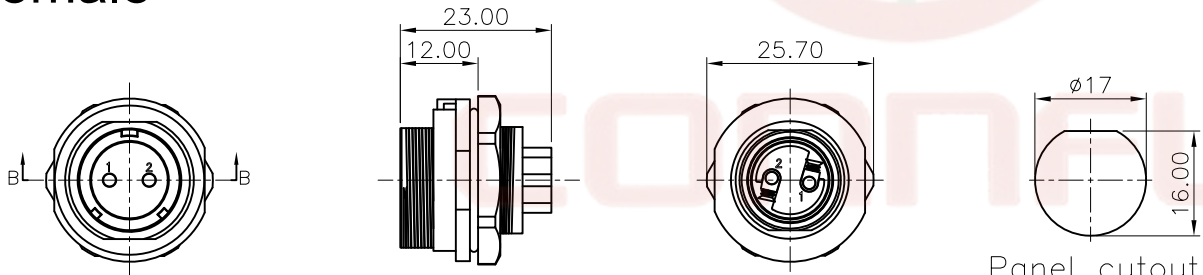
**晨翔电子有限公司**  
**CONNPLY CONNPLY ELECTRONIC CO. LTD**

The information provided herein is from CONNPLY Electronic Co., Ltd. and is confidential. Any disclosure to a party other than the recipient is prohibited. The intellectual properties and its rights of CONNPLY Electronic Co., Ltd. are reserved. All intellectual properties provided herein are for reference purposes only and does not constitute authorization of its use. CONNPLY may enforce its intellectual property rights at its own discretion; failures or delays to exercise such rights does not constitute a waiver of such rights.

# Male



# Female



Panel cutout  
Plate thickness  $\leq 3\text{mm}$

REV.	DESCRIPTION	DRAWN	CHECKED	APPROVED
A	NEW RELEASE	WPY 02/08/25'		

**NOTE:**

- Rated voltage: 500V
- Rated current: 5/10A
- Insulation resistance: 2000M $\Omega$
- Withstand voltage: 1500V
- Operating temperature:  $-25^{\circ}\text{C}$  to  $+85^{\circ}\text{C}$
- Wiring method: Screw locking
- Mating cycle: 500 cycles

**Materials:**

- Shell material: PPO, PA66, UL94V-0
- Insulation material: PPS  
High temperature resistance  $260^{\circ}\text{C}$
- Contact material: Brass with gold plating

**Product Number Code:**

**DS1110-72-X X X X X X**

- Install Type:
  - B: Rear nut type
- Cable diameter:
  - 1: 6-10mm
- Contact Plating:
  - 8: Gold flash
- Color of nut:
  - L: blue
- Color of housing:
  - B: Black
- No. of Contacts:
  - 02: 2Pin
  - 03: 3Pin
  - 04: 4Pin
  - 05: 5Pin

GENERAL TOLERANCE		ANGLE TOLERANCE		PROJECTION		TITLE	17mm Waterproof aviation plug (Screw type)	
X.	$\pm 0.60$	X.	$\pm 5^{\circ}$	UNITS	mm	SERIES	DS1110-72 Series	
.X	$\pm 0.38$	.X	$\pm 3^{\circ}$	SHEET SIZE		A4		
.XX	$\pm 0.25$	.XX	$\pm 2^{\circ}$	DRAWING TYPE		CUSTOMER		
SCALE		1:1	SHEET		2 OF 5			
DRAWING NO.		C-DS1110-72-XXXXXX-A						

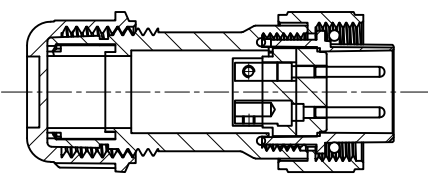
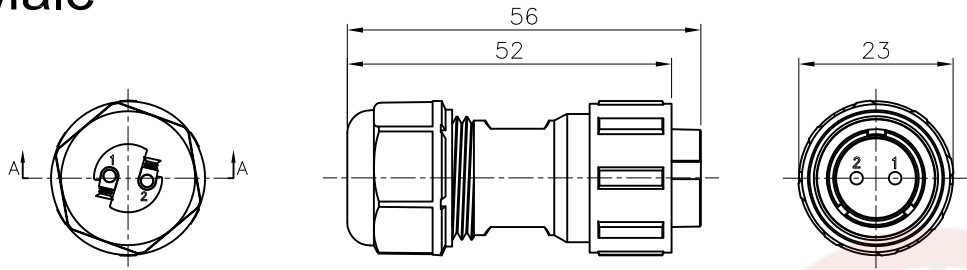


晨翔电子有限公司

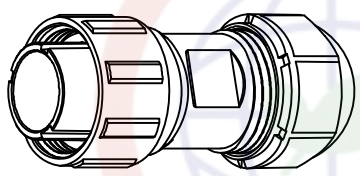
**CONNPLY CONNPLY ELECTRONIC CO. LTD**

The information provided herein is from CONNELY Electronic Co., Ltd. and is confidential. Any disclosure to a party other than the recipient is prohibited. The intellectual properties and its rights of CONNELY Electronic Co., Ltd. are strictly protected. All intellectual properties provided herein are for reference purposes only and does not constitute authorization of its use in any format or manner. CONNELY may enforce its intellectual property rights at its own discretion; failures or delays to exercise such rights does not constitute a waiver of such rights.

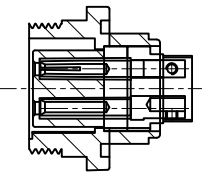
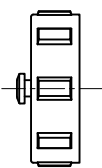
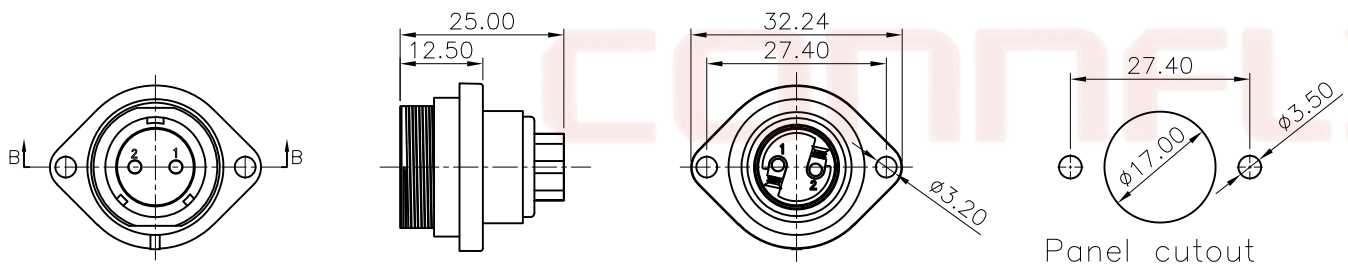
# Male



SECTION A-A



# Female



SECTION B-B

Panel cutout  
Plate thickness  $\leq 3\text{mm}$

REV.	DESCRIPTION	DRAWN	CHECKED	APPROVED
A	NEW RELEASE	WPY 02/08/25'		

NOTE:  
 1. Rated voltage: 500V  
 2. Rated current: 5/10A  
 3. Insulation resistance: 2000MΩ  
 4. Withstand voltage: 1500V  
 5. Operating temperature: -25°C to +85°C  
 6. Wiring method: Screw locking  
 7. Mating cycle: 500 cycles

Materials:  
 1. Shell material: PPO, PA66, UL94V-0  
 2. Insulation material: PPS  
 High temperature resistance 260°C  
 3. Contact material: Brass with gold plating

Product Number Code:  
**DS1110-72-XXXXXX**

- Install Type:  
C: Flange type
- Cable diameter:  
1: 6-10mm
- Contact Plating:  
8: Gold flash
- Color of nut:  
L: blue
- Color of housing:  
B: Black
- No. of Contacts:  
02: 2Pin    03: 3Pin  
04: 4Pin    05: 5Pin

GENERAL TOLERANCE		ANGLE TOLERANCE	
X.	±0.60	X.	±5°
.X	±0.38	.X	±3°
.XX	±0.25	.XX	±2°

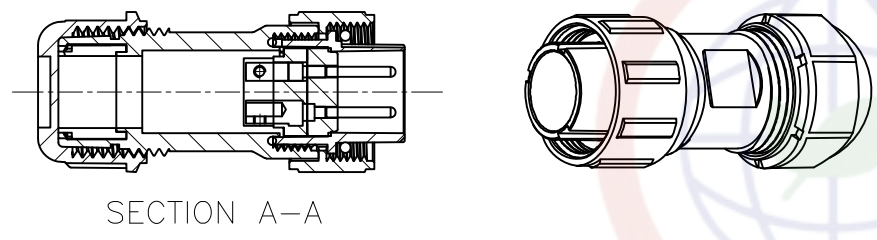
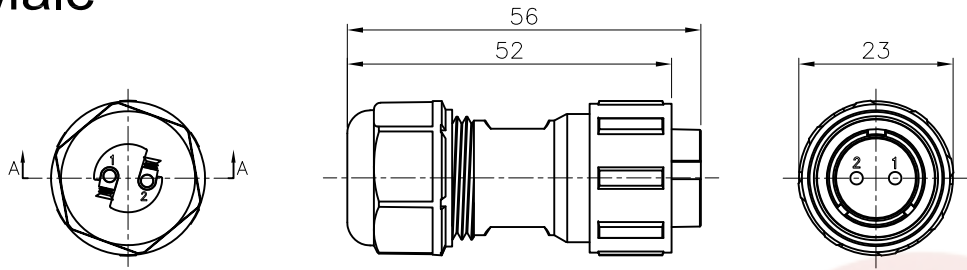
PROJECTION	TITLE
	17mm Waterproof aviation plug (Screw type)
UNITS	mm
SHEET SIZE	A4
SERIES	DS1110-72 Series

DRAWING TYPE	CUSTOMER
SCALE	1:1 SHEET 3 OF 5
DRAWING NO.	C-DS1110-72-XXXXXX-A

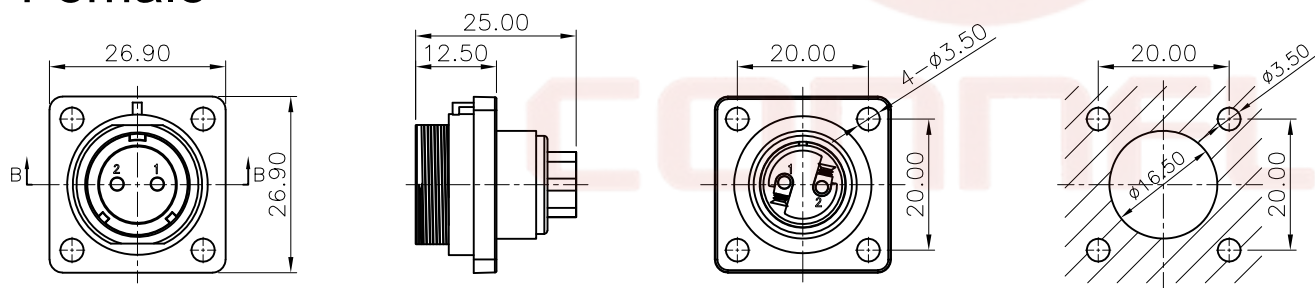
**晨翔电子有限公司**  
**CONNELY CONNELY ELECTRONIC CO. LTD**

The information provided herein is from CONNPLY Electronic Co., Ltd. and is confidential. Any disclosure to a party other than the recipient is prohibited. The intellectual properties and its rights of CONNPLY Electronic Co., Ltd. are reserved. All intellectual properties provided herein are for reference purposes only and does not constitute authorization of its use in any format or manner. CONNPLY may enforce its intellectual property rights at its own discretion; failures or delays to exercise such rights does not constitute a waiver of such rights.

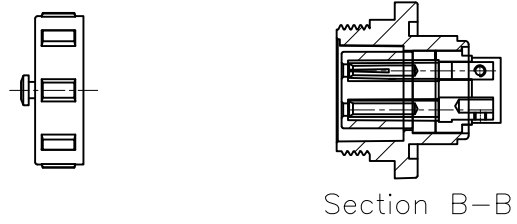
# Male



# Female



Panel cutout  
Plate thickness ≤3mm



REV.	DESCRIPTION	DRAWN	CHECKED	APPROVED
A	NEW RELEASE	WPY 02/08/25'		

NOTE:  
 1. Rated voltage: 500V  
 2. Rated current: 5/10A  
 3. Insulation resistance: 2000MΩ  
 4. Withstand voltage: 1500V  
 5. Operating temperature: -25°C to +85°C  
 6. Wiring method: Screw locking  
 7. Mating cycle: 500 cycles

Materials:  
 1. Shell material: PPO, PA66, UL94V-0  
 2. Insulation material: PPS  
 High temperature resistance 260°C  
 3. Contact material: Brass with gold plating  
 Product Number Code:  
**DS1110-72-XXXXXX**

- Install Type:  
D: Square disc type
- Cable diameter:  
1: 6-10mm
- Contact Plating:  
8: Gold flash
- Color of nut:  
L: blue
- Color of housing:  
B: Black
- No. of Contacts:  
02: 2Pin    03: 3Pin  
04: 4Pin    05: 5Pin

GENERAL TOLERANCE		ANGLE TOLERANCE		PROJECTION		TITLE	17mm Waterproof aviation plug (Screw type)	
X.	±0.60	X.	±5°	UNITS	mm	SERIES	DS1110-72 Series	
.X	±0.38	.X	±3°	SHEET SIZE		A4		
.XX	±0.25	.XX	±2°	DRAWING TYPE		CUSTOMER		
SCALE		1:1		SHEET		4 OF 5		
DRAWING NO.		C-DS1110-72-XXXXXX-A						

**晨翔电子有限公司**  
**CONNPLY CONNPLY ELECTRONIC CO. LTD**

Dept	1	2	3	4	5	6	7	8
Qty								
DC	1							
ED	1							
IE	1							
ISO	1							
PD	1							
R&D	1							
SD	1							
QA	1							
QC	1							
QE	1							

REV.	DESCRIPTION	DRAWN	CHECKED	APPROVED
A	NEW RELEASE	WPY 02/08/25'		

# Solder contact arrangement and spec

No.of Contacts	2	3	4	5
Malc contact face view				
Rated current (A)	10A	10A	5A	5A
Contact diameter	1.5*2	1.5*3	1.0*4	1.0*5
Wiring method	Screw locking			
Woring Voltage(AC.V)	500V	500V	500V	500V
Test Voltage(AC.V)1min	1500V	1500V	1500V	1500V
Contact resistance(mΩ)	2.5mΩ	2.5mΩ	5mΩ	5mΩ
Wire Size(mm <sup>2</sup> /AWG)	≤2/14	≤2/14	≤0.785/18	≤0.785/18

The information provided herein is from CONNFLY Electronic Co., Ltd. and is confidential. Any disclosure to a party other than the recipient is prohibited. The intellectual properties and its rights are strictly reserved for CONNFLY. All intellectual properties provided herein are for reference purposes only and does not constitute authorization of its use in any format or manner. CONNFLY may enforce its intellectual property rights at its own discretion; failures or delays to exercise such rights does not constitute a waiver of such rights.

GENERAL TOLERANCE	ANGLE TOLERANCE	PROJECTION		TITLE	17mm Waterproof aviation plug (Screw type)
X. ±0.60	X. ±5°	UNITS	mm	SHEET SIZE	A4
.X ±0.38	.X ±3°			SERIES	DS1110-72 Series
.XX ±0.25	.XX ±2°				
DRAWING TYPE	CUSTOMER				
SCALE	1:1	SHEET	5 OF 5		
DRAWING NO.	C-DS1110-72-XXXXXX-A				

**晨翔电子有限公司**  
**CONNFLY CONNFLY ELECTRONIC CO. LTD**