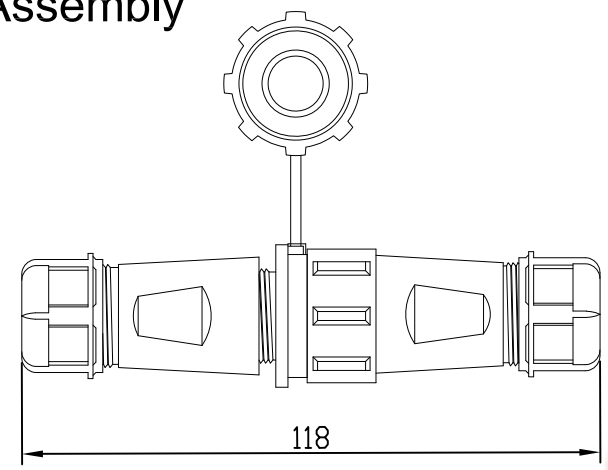


The information provided herein is from CONNFLY Electronic Co., Ltd. and is confidential. Any disclosure to a party other than the recipient is prohibited. The intellectual properties and its rights of CONNFLY Electronic Co., Ltd. are strictly protected. All intellectual properties provided herein are for reference purposes only and does not constitute authorization of its use in any format or manner. CONNFLY may enforce its intellectual property rights at its own discretion; failures or delays to exercise such rights does not constitute a waiver of such rights.

1                      2                      3                      4                      5                      6                      7                      8

REV.	DESCRIPTION	DRAWN	CHECKED	APPROVED
A	NEW RELEASE	WPY 10/08/24'		

# Assembly



Suitable for  $\phi 4-7$   $\phi 5-9$   $\phi 8-12$  wires

Note:

1. Rated voltage: 400V-500V
2. Rated current: 5A-30A
3. Insulation resistance: 2000M $\Omega$
4. Withstand voltage: 1200V-1500V
5. Operating temperature: -30 $^{\circ}$ C to +90 $^{\circ}$ C
6. Wiring method: Welding

Materials:

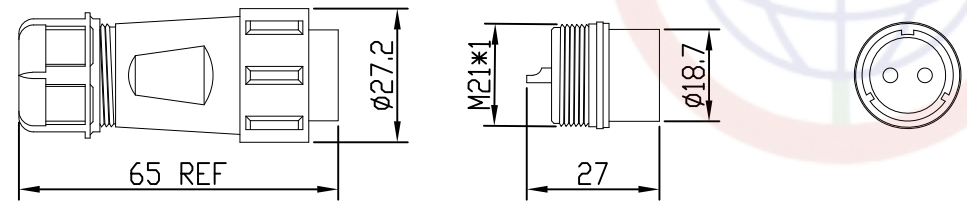
1. Shell material: PA66
2. Insulation material: PPS  
High temperature resistance 260 $^{\circ}$ C
3. Contact material: Copper gold plating

Product Number Code:

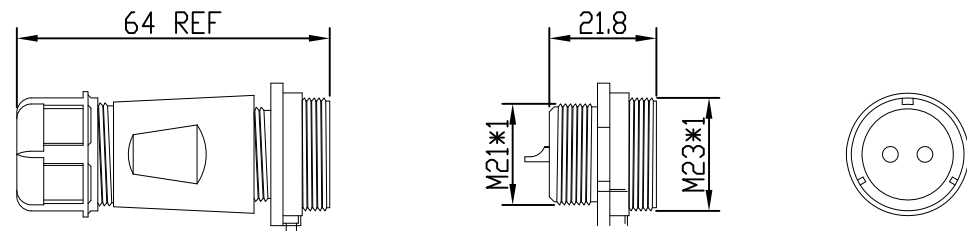
**DS1110-58-X X X X X**

- Install Type
- A:A Type
- Contact Plating
- 8:Gold flash
- Color of nut
- U:Blue
- Color of housing
- B:Black
- No.of Contacts
- 2 3 4 5 5B 7 9 12

## Male



## Famale



GENERAL TOLERANCE		ANGLE TOLERANCE		PROJECTION	TITLE
X.	$\pm 0.60$	X.	$\pm 5^{\circ}$		$\phi 21$ waterproof aviation plug docking type
.X	$\pm 0.38$	.X	$\pm 3^{\circ}$	mm	
.XX	$\pm 0.25$	.XX	$\pm 2^{\circ}$	A4	DS1110-58 Series
DRAWING TYPE		CUSTOMER		<b>晨翔电子有限公司</b> <b>CONNFLY CONNFLY ELECTRONIC CO. LTD</b>	
SCALE		1:1 SHEET 1 OF 1			
DRAWING NO.		C-DS1110-58-XXXXX-A			

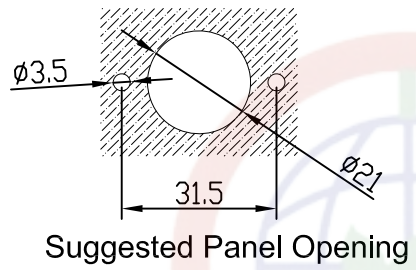
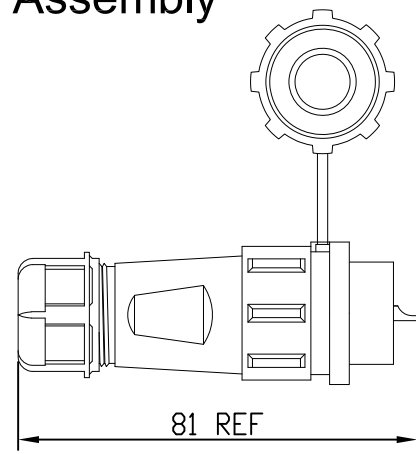
1                      2                      3                      4                      5                      6                      7                      8

The information provided herein is from CONNFLY Electronic Co., Ltd. and is confidential. Any disclosure to a party other than the recipient is prohibited. The intellectual properties and its rights of CONNFLY Electronic Co., Ltd. are reserved. All intellectual properties provided herein are for reference purposes only and does not constitute authorization of its use in any format or manner. CONNFLY may enforce its intellectual property rights at its own discretion; failures or delays to exercise such rights does not constitute a waiver of such rights.

1 2 3 4 5 6 7 8

REV.	DESCRIPTION	DRAWN	CHECKED	APPROVED
A	NEW RELEASE	WPY 10/08/24'		

# Assembly



Suitable for  $\phi 4-7$   $\phi 5-9$   $\phi 8-12$  wires

### Note:

1. Rated voltage: 400V-500V
2. Rated current: 5A-30A
3. Insulation resistance: 2000M $\Omega$
4. Withstand voltage: 1200V-1500V
5. Operating temperature: -30°C to +90°C
6. Wiring method: Welding

### Materials:

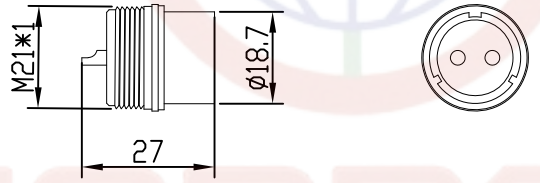
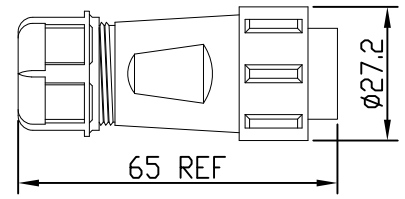
1. Shell material: PA66
2. Insulation material: PPS  
High temperature resistance 260°C
3. Contact material: Copper gold plating

### Product Number Code:

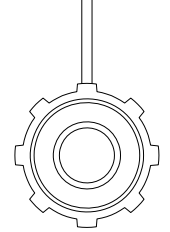
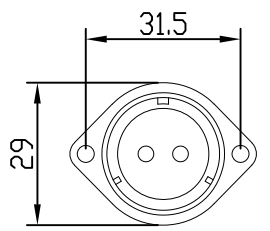
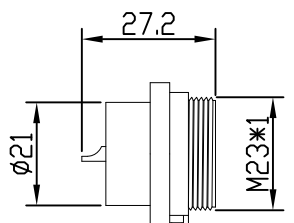
DS1110-58-X X X X X

- Install Type
- B:B Type
- Contact Plating
- 8:Gold flash
- Color of nut
- U:Blue
- Color of housing
- B:Black
- No.of Contacts
- 2 3 4 5 5B 7 9 12

# Male



# Female



GENERAL TOLERANCE		ANGLE TOLERANCE		PROJECTION	TITLE
X.	±0.60	X.	±5°		$\phi 21$ waterproof aviation plug
.X	±0.38	.X	±3°	mm	flange type
.XX	±0.25	.XX	±2°	A4	SERIES DS1110-58 Series
DRAWING TYPE		CUSTOMER		晨翔电子有限公司 <b>CONNFLY CONNFLY ELECTRONIC CO. LTD</b>	
SCALE		SHEET			
DRAWING NO.		C-DS1110-58-XXXXX-A			

1 2 3 4 5 6 7 8

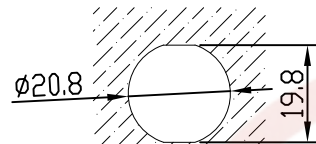
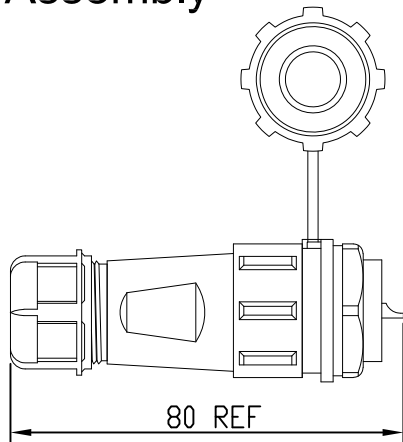
The information provided herein is from CONNFLY Electronic Co., Ltd. and is confidential. Any disclosure to a party other than the recipient is prohibited. The intellectual properties and its rights are reserved for CONNFLY Electronic Co., Ltd. All intellectual properties provided herein are for reference purposes only and does not constitute authorization of its use in any format or manner. CONNFLY may enforce its intellectual property rights at its own discretion; failures or delays to exercise such rights does not constitute a waiver of such rights.

1                      2                      3                      4                      5                      6                      7                      8

Dept	Qty
DC	1
ED	1
IE	1
ISO	1
PD	1
R&D	1
SD	1
QA	1
QC	1
QE	1

REV.	DESCRIPTION	DRAWN	CHECKED	APPROVED
A	NEW RELEASE	WPY 10/08/24'		

# Assembly



Suggested Panel Opening

Suitable for  $\phi 4-7$   $\phi 5-9$   $\phi 8-12$  wires

Note:

1. Rated voltage: 400V-500V
2. Rated current: 5A-30A
3. Insulation resistance: 2000M $\Omega$
4. Withstand voltage: 1200V-1500V
5. Operating temperature: -30°C to +90°C
6. Wiring method: Welding

Materials:

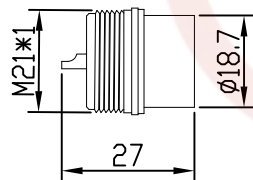
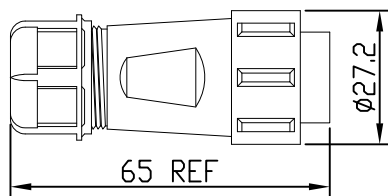
1. Shell material: PA66
2. Insulation material: PPS  
High temperature resistance 260°C
3. Contact material: Copper gold plating

Product Number Code:

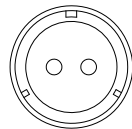
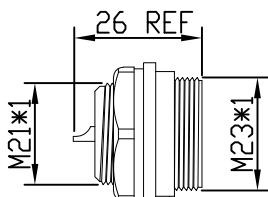
DS1110-58-X X X X X

- Install Type
- C:C Type
- Contact Plating
- 8:Gold flash
- Color of nut
- U:Blue
- Color of housing
- B:Black
- No. of Contacts
- 2 3 4 5 5B 7 9 12

# Male



# Famale



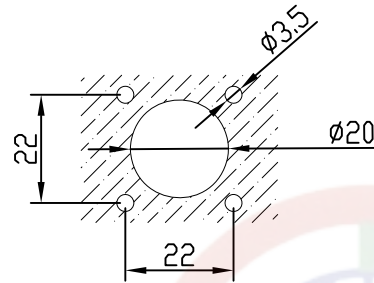
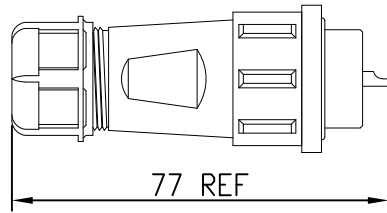
CONNFLY

GENERAL TOLERANCE		ANGLE TOLERANCE		PROJECTION		TITLE	$\phi 21$ waterproof aviation plug rear nut type
X.	$\pm 0.60$	X.	$\pm 5^\circ$	UNITS	mm	SERIES	DS1110-58 Series
.X	$\pm 0.38$	.X	$\pm 3^\circ$	SHEET SIZE	A4		
.XX	$\pm 0.25$	.XX	$\pm 2^\circ$				
DRAWING TYPE		CUSTOMER		晨翔电子有限公司 <b>CONNFLY CONNFLY ELECTRONIC CO. LTD</b>			
SCALE		1:1					
DRAWING NO.		C-DS1110-58-XXXXX-A					

1                      2                      3                      4                      5                      6                      7                      8

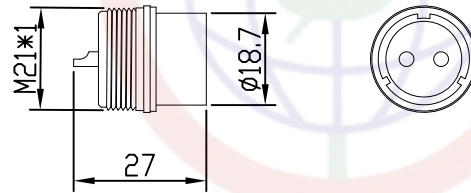
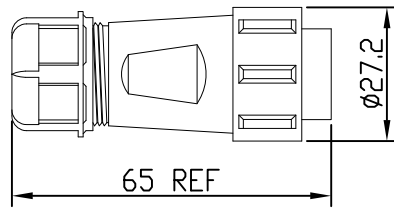
The information provided herein is from CONNFLY Electronic Co., Ltd. and is confidential. Any disclosure to a party other than the recipient is prohibited. The intellectual properties and its rights of CONNFLY Electronic Co., Ltd. are strictly protected. All intellectual properties provided herein are for reference purposes only and does not constitute authorization of its use in any format or manner. CONNFLY may enforce its intellectual property rights at its own discretion; failures or delays to exercise such rights does not constitute a waiver of such rights.

# Assembly

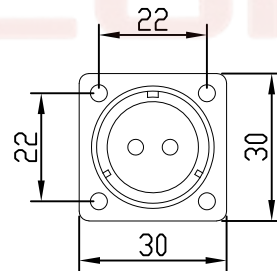
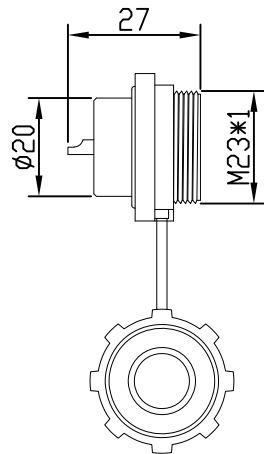


Suggested Panel Opening

# Male



# Famale



REV.	DESCRIPTION	DRAWN	CHECKED	APPROVED
A	NEW RELEASE	WPY 10/08/24'		

Suitable for  $\phi 4-7$   $\phi 5-9$   $\phi 8-12$  wires

Note:

1. Rated voltage: 400V-500V
2. Rated current: 5A-30A
3. Insulation resistance: 2000M $\Omega$
4. Withstand voltage: 1200V-1500V
5. Operating temperature: -30°C to +90°C
6. Wiring method: Welding

Materials:

1. Shell material: PA66
2. Insulation material: PPS  
High temperature resistance 260°C
3. Contact material: Copper gold plating

Product Number Code:

DS1110-55-X X X X X

- Install Type
- D:D Type
- Contact Plating
- 8:Gold flash
- Color of nut
- U:Blue
- Color of housing
- B:Black
- No. of Contacts
- 2 3 4 5 5B 7 9 12

GENERAL TOLERANCE		ANGLE TOLERANCE		PROJECTION	TITLE
X.	$\pm 0.60$	X.	$\pm 5^\circ$		$\phi 17$ waterproof aviation plug
.X	$\pm 0.38$	.X	$\pm 3^\circ$	mm	square disc type
.XX	$\pm 0.25$	.XX	$\pm 2^\circ$	A4	SERIES DS1110-58 Series
DRAWING TYPE		CUSTOMER		<b>晨翔电子有限公司</b> <b>CONNFLY CONNFLY ELECTRONIC CO. LTD</b>	
SCALE		1:1 SHEET 1 OF 1			
DRAWING NO.		C-DS1110-58-XXXXX-A			

Dept  
Qty

DC 1  
ED 1  
IE 1  
ISO 1  
PD 1  
R&D 1  
SD 1  
QA 1  
QC 1  
QE 1

The information provided herein is from CONNFLY Electronic Co., Ltd. and is confidential. Any disclosure to a party other than the recipient is prohibited. The intellectual properties and its rights of CONNFLY Electronic Co., Ltd. are strictly protected without prior written consent from CONNFLY. All intellectual properties provided herein are for reference purposes only and does not constitute authorization of its use in any format or manner. CONNFLY may enforce its intellectual property rights at its own discretion; failures or delays to exercise such rights does not constitute a waiver of such rights.

REV.	DESCRIPTION	DRAWN	CHECKED	APPROVED
A	NEW RELEASE	WPY 10/08/24'		

# Solder contact arrangement and spec

No.of Contacts	2	3	4	5	5B	7	9	12
Male contact face view								
Rated current (A)	30A	30A	30A	30A	15A	15A	5A	5A
Contact diameter	Ø3×2	Ø3×3	Ø3×4	Ø3×5	Ø2×5	Ø2×7	Ø1×9	Ø1×12
Wiring method	Welding							
Working Voltage (AC.V)	500V	500V	500V	500V	500V	500V	400V	400V
Testvoltage(AC.V)	1500V	1500V	1500V	1500V	1500V	1500V	1200V	1200V
Contact resistance(mΩ)	1mΩ	1mΩ	1mΩ	1mΩ	2.5mΩ	2.5mΩ	5mΩ	5mΩ
Wire Size (mm <sup>2</sup> /AWG)	≤4/11	≤4/11	≤4/11	≤4/11	≤2/14	≤2/14	≤0.785/18	≤0.785/18

GENERAL TOLERANCE		ANGLE TOLERANCE	
X.	±0.60	X.	±5°
.X	±0.38	.X	±3°
.XX	±0.25	.XX	±2°
DRAWING TYPE		CUSTOMER	
SCALE	1:1	SHEET	1 OF 1
DRAWING NO.	C-DS1110-58-XXXX-A		

PROJECTION		TITLE	Ø21 Waterproof aviation plug solder series
UNITS	mm	SERIES	DS1110-58 Series
SHEET SIZE	A4		

**晨翔电子有限公司**  
**CONNFLY CONNFLY ELECTRONIC CO. LTD**