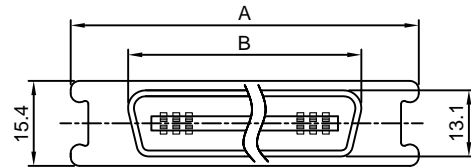


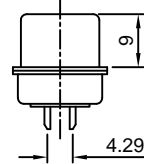
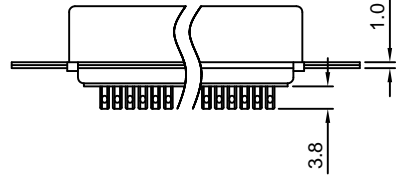
The information provided herein is from CONNELY Electronic Co., Ltd. and is confidential. Any disclosure to a party other than the recipient is prohibited. The intellectual properties and its rights contained herein, including but not limited to, trademarks, patents, copyrights, trade secrets, and technical know-how, are owned exclusively by CONNELY or its affiliates. Unauthorized use or reproduction of any part of this document is strictly prohibited. CONNELY may enforce its intellectual property rights at its own discretion, failures or delays to exercise such rights does not constitute a waiver of such rights.

Male Series

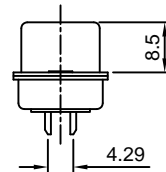
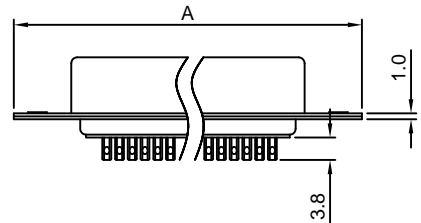
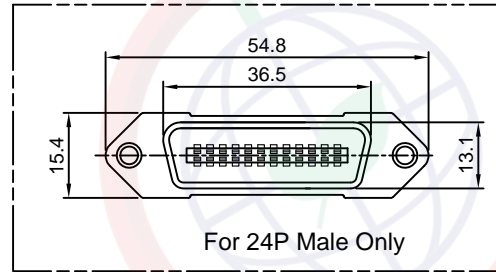
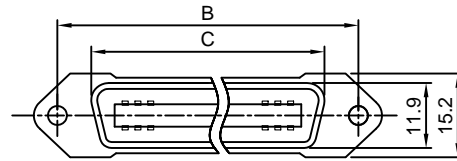


Male dimensions

Positions	A	B
14	38.5	25.6
24	54.8	36.5
36	62.0	49.4
50	77.4	64.4

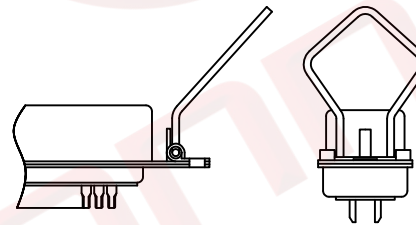


Female Series



Female dimensions

Positions	A	B	C
14	43.9	36.0	25.2
24	54.7	46.8	36.0
36	67.7	59.7	48.9
50	82.8	74.9	64.1



(Series Image-Reference Only)

REV.	DESCRIPTION	DRAWN	CHECKED	APPROVED
A	NEW RELEASE	LJC 01/16/09'		LJC 01/16/09'
B	DRAWING UPDATE	JLZ 12/07/19'		

Notes:

Specifications:

- Contact Resistance: 30mΩ Max.
- Insulation Resistance: 1000MΩ Min.
- Dielectric Withstanding Voltage: 500V AC(rms) For 1 Minute.
- Current Rating:1A.
- Temperature: -40°C~+105°C.

Materials:

- Contact Material: Copper Alloy.
- Contact Plating: Selective gold flash.
- Insulator Material: PBT,UL94-V0.
- Shell Material: Steel.

Product Number Code:

DS1039-01 - X X X X X

- X X X X X Latch Support
- S: W/ Latch(For Female)
- X: W/O Latch
- 0: Selective gold flash
- 1: Selective 10u" gold
- 3: Selective 30u" gold
- L: Blue
- W: White
- B: Black
- M: male
- F: female
- No. of Positions
- 14 24 36 50

GENERAL TOLERANCE		ANGLE TOLERANCE		PROJECTION		TITLE	Centronic Connector Solder Type	
X.	±0.60	X.	±5°	UNITS	mm			
.X	±0.38	.X	±3°	SHEET SIZE	A4	SERIES	DS1039-01 SERIES	
.XX	±0.25	.XX	±2°	晨翔电子有限公司 CONNFLY CONNELY ELECTRONIC CO. LTD				
DRAWING TYPE		CUSTOMER						
SCALE	1:1	SHEET	1 OF 1					
DRAWING NO.		C-DS1039-01-XXXXX-B						