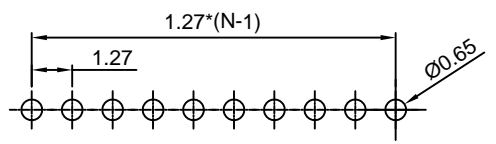
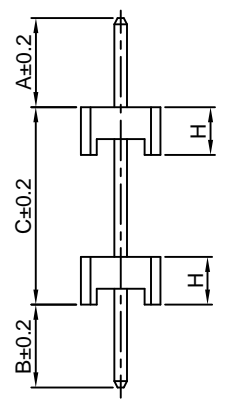
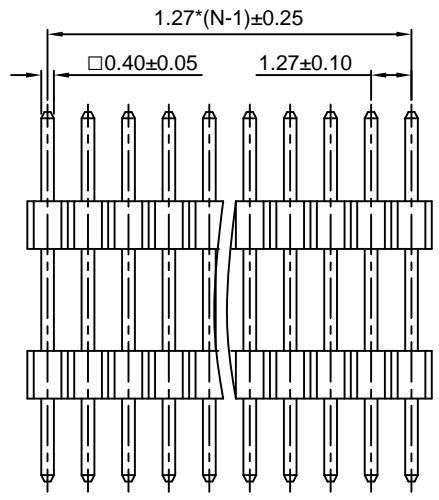
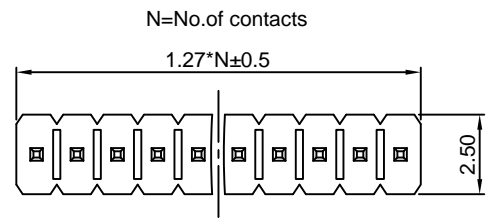


Dept	
Qty	
DC	1
ED	1
IE	1
ISO	1
PD	1
R&D	1
SD	1
QA	1
QC	1
QE	1



Recommend PCB layout  
(Tolerance:±0.05)



(Series Image-Reference Only)

TYPE	DIM A	DIM B	DIM C
1	2.80	2.60	6.20
2	3.30	2.00	2.50
	2.40	2.40	9.00

REV.	DESCRIPTION	DRAWN	CHECKED	APPROVED
A	NEW RELEASE	LJH 06/22/05'		LJC 06/22/05'
B	DRAWING UPDATE	JLZ 08/17/20'		

Notes:

Specifications:

- Contact Resistance: 20mΩ Max.
- Insulation Resistance: 500MΩ Min.
- Dielectric Withstanding Voltage: 300V AC(rms) For 1 Minute.
- Current Rating:1A.
- Temperature: -40°C~+105°C.

Materials:

- Contact Material: Copper Alloy.
- Contact Plating: Gold Plating Over Nickel.
- Insulator Material: PA-9T,Black,UL94-V0.

Product Number Code:  
DS1031-04 - X X X X X X - X

- Plating level  
3A: Level 3A
- DIM.A B C type  
1: Type 1  
or A\*.\*-B\*.\*C\*.\*
- Housing height(DIM. H)  
1: 1.00mm 2: 1.50mm  
3: 2.00mm 5: 2.54mm
- Mounting type  
V: V/T type
- Housing color  
B:Black
- Contact plating  
8: Full gold flash
- Connector type  
P:Plug
- No.of contacts  
1x1-1x40

GENERAL TOLERANCE		ANGLE TOLERANCE		PROJECTION		TITLE	
X.	±0.60	X.	±5°	UNITS	mm	1.27mm Pin Header Single Row Stack V/T Type	
.X	±0.38	.X	±3°	SHEET SIZE	A4	SERIES	DS1031-04 SERIES
.XX	±0.25	.XX	±2°				
DRAWING TYPE		CUSTOMER					
SCALE	1:1	SHEET	1 OF 1				
DRAWING NO.	C-DS1031-04-XXXXXXX-X-B						